

Watershed Green Lakes State Park

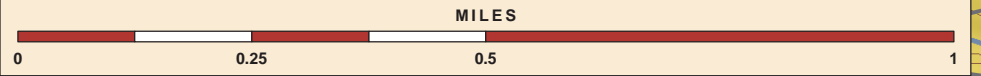
Map produced by NYSOPRHP-GIS Unit, July 30, 2010

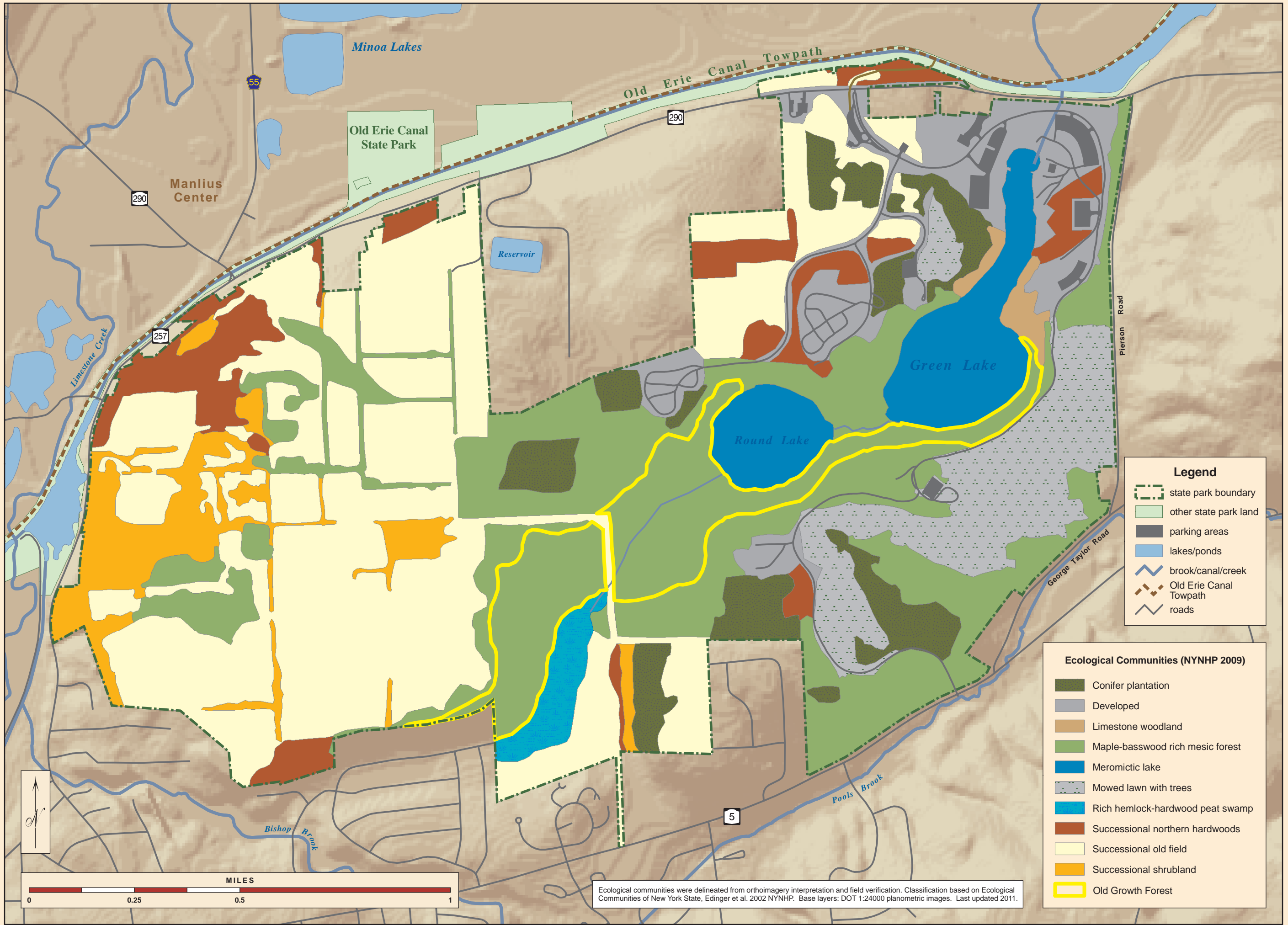
Legend

- state park boundary
- parking areas
- beach
- lakes/ponds
- wetlands
- stream
- intermittent stream
- brook/canal/creek
- roads
- 20' contours

USGS Drainage Basins

- Pools Brook
Upper Chittenango Creek
- Pools Brook
Upper Chittenango Creek
- Pools Brook
Upper Chittenango Creek
- Limestone Creek
- Limestone Creek
- Limestone Creek



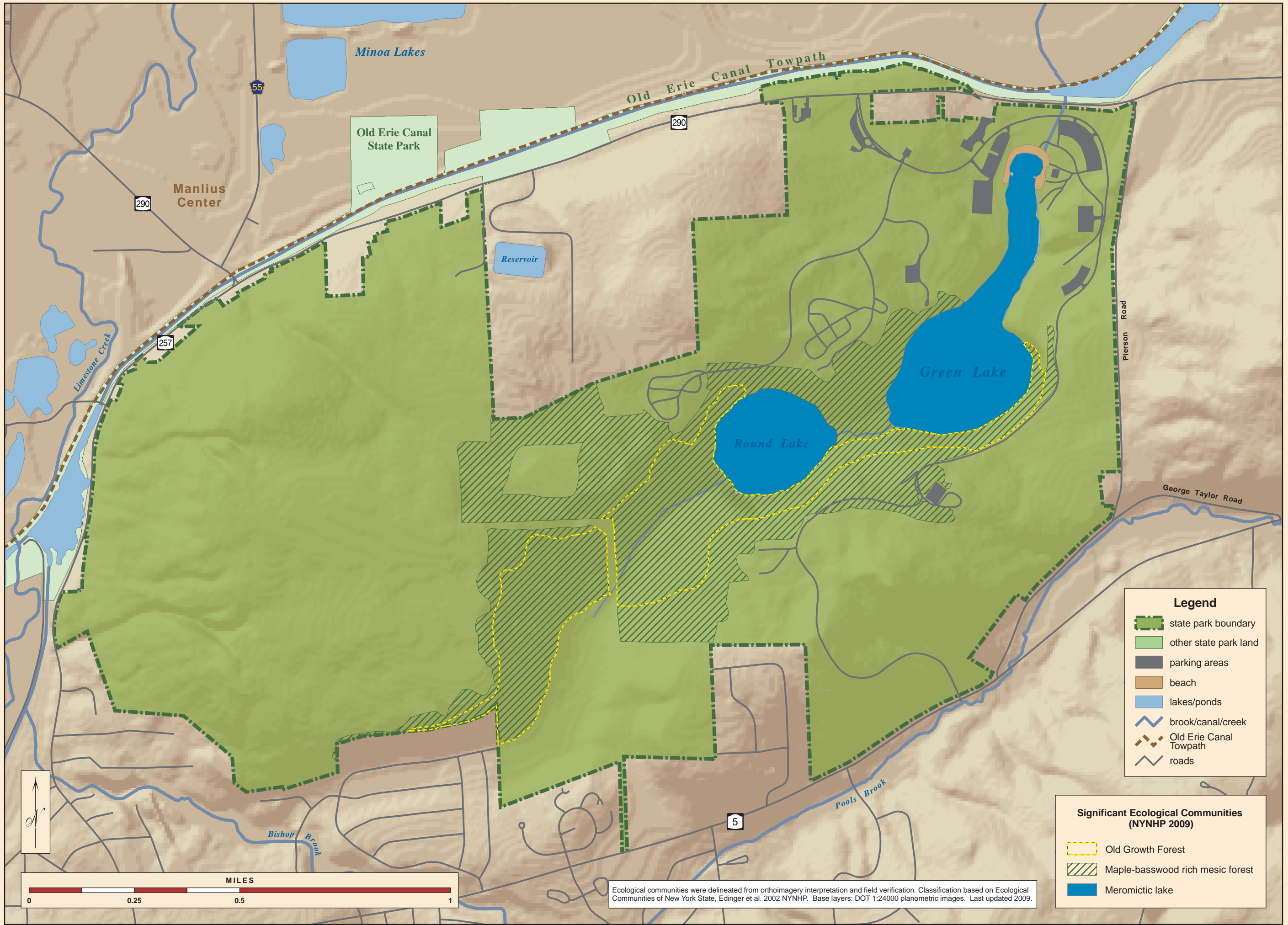


Ecological Communities

Green Lakes State Park

Map produced by NYSOPRHP-GIS Unit, July 30, 2010.





Legend

- state park boundary
- other state park land
- parking areas
- beach
- lakes/ponds
- brook/canal/creek
- Old Erie Canal Towpath
- roads

Significant Ecological Communities (NYNHP 2009)

- Old Growth Forest
- Maple-basswood rich mesic forest
- Meromictic lake

Ecological communities were delineated from orthoimagery interpretation and field verification. Classification based on Ecological Communities of New York State, Edinger et al. 2002 NYNHP. Base layers: DOT 1:24000 planometric images. Last updated 2009.

Significant Ecological Communities
Green Lakes State Park



