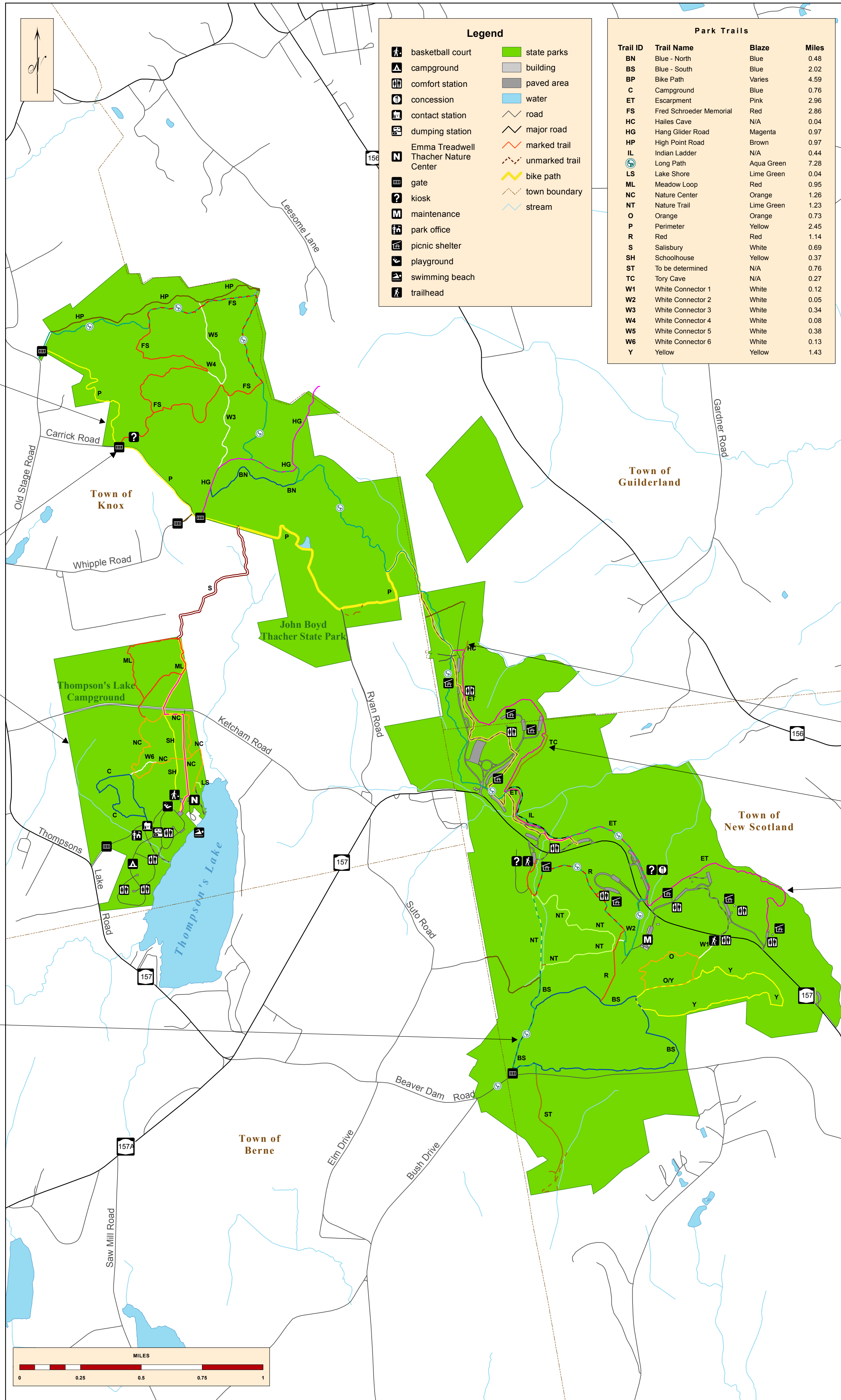


General

- Designate uses, including hiking, biking, snowshoeing, cross-country skiing and snowmobiling, for each trail
- Improve the trail system through upgrades or reroutes of unsustainable trail sections and closure and restoration of some trails.
- Enhance access to park resources along trails such as scenic vistas, escarpment and its geologic formations, wetlands, and other water resources
- Improve accessibility of the trail system
- Enhance trailhead and intersection signage along trails and directional signage along roadways indicating access points to the parks and trail system
- Enhance interpretation throughout the trail system to highlight natural, cultural and historic resources
- Explore external trail connections with adjacent landowners
- Expand partnerships with local organizations and user groups for development, maintenance, and monitoring of the trail system

Bike Path

- Phase I: Develop bike path in main section of Thacher from Lagrange Bush to the Hailes Cave area.
- Phase II: Develop bike path further north and west making connection to Thompsons' Lake SP



Northern Thacher SP

- Develop short reroutes at specified locations along P, FS and B Trails
- Close and restore W1, W2 and remnant trails
- Improve trail directional signage at Carrick Road trailhead

Mountain Biking

- Develop Mountain Biking Skills Park and looped trail system near the Carrick Road trailhead.

Thompson's Lake Campground

- Improve hiking trails with water management techniques and treadway improvements
- Reblaze/rename NC Trail to create a loop
- Close and restore W8 Trail.

Long Path

- Improve signage, blazing, road crossing and surfacing of trail near existing park office
- Reblaze portion of trail based on trail system improvements
- Continue to partner with volunteers for maintenance and visibility of this long distance trail.

Southern Thacher SP

- Develop accessible paths to waterfalls near Paint Mine, Hop Field and Yellow Rocks picnic areas
- Close and restore W2, W3, and W6 Trails
- Develop alternate trail alignment for W3 Trail
- Rename/reblaze W7 as Yellow Trail
- Reroute sections of Yellow and Orange Trails
- Reroute portions of Nature and Red Trails.

Hailes Cave Trail

- Develop the Hailes Cave Trail providing visual access of the cave opening.

Tory Cave Trail

- Develop the Tory Cave Trail extending north from the Indian Ladder Trail to connect to the Horseshoe I picnic area.

Escarpment Trail

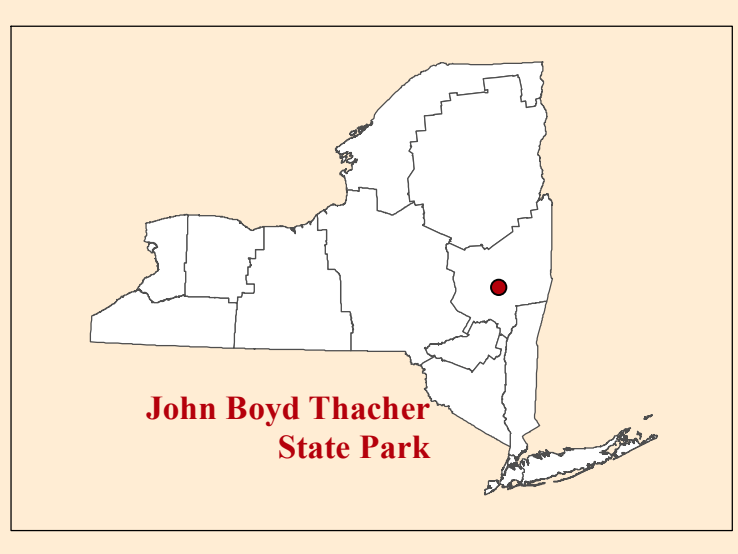
- Improve accessibility by paving a portion of the Escarpment Trail
- Extend Escarpment Trail to Green House picnic area.

Winter Trail Use

- The new Visitor Center and the Emma Treadwell Thacher Nature Center will act as warming huts.
- A new building will be constructed at Hop Field and will act as a warming hut.
- Restrooms at Paint Mine will continue to be open and heated during the winter months.
- Snowmobile trailer parking will remain available at the Paint Mine, Carrick Road, Old Stage Road and Ryan Road trailheads.
- All trails will be open for winter use except Indian Ladder, Tory Cave and Hailes Cave Trails. The park will offer a limited number of winter guided hikes on these trails as conditions and resources permit.

Destination Locations

- Improve access, install destination signage and/or provide interpretation for identified locations throughout the trail system that provide unique opportunities for visitors to experience connections with nature.



Trails Plan

John Boyd Thacher State Park

Map Produced by NYSOPRIP GIS Bureau, October 25, 2013.

