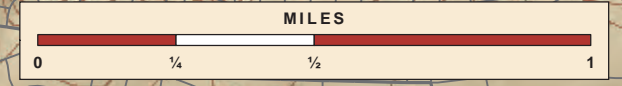
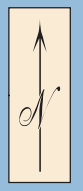




- Legend**
- Underwater Boundary
 - Road
 - Major Road
 - Long Island Rail Road
 - 10' contour
 - Town Boundary
 - Streams
 - Alfred E. Smith Sunken Meadow State Park
 - Other State Parks
 - Building
 - Boardwalk
 - Parking Lot
 - Tee
 - Fairway
 - Green
 - Sand Bunker
 - Village of Nissequogue
 - Beach
 - Water
 - Tidal Flats



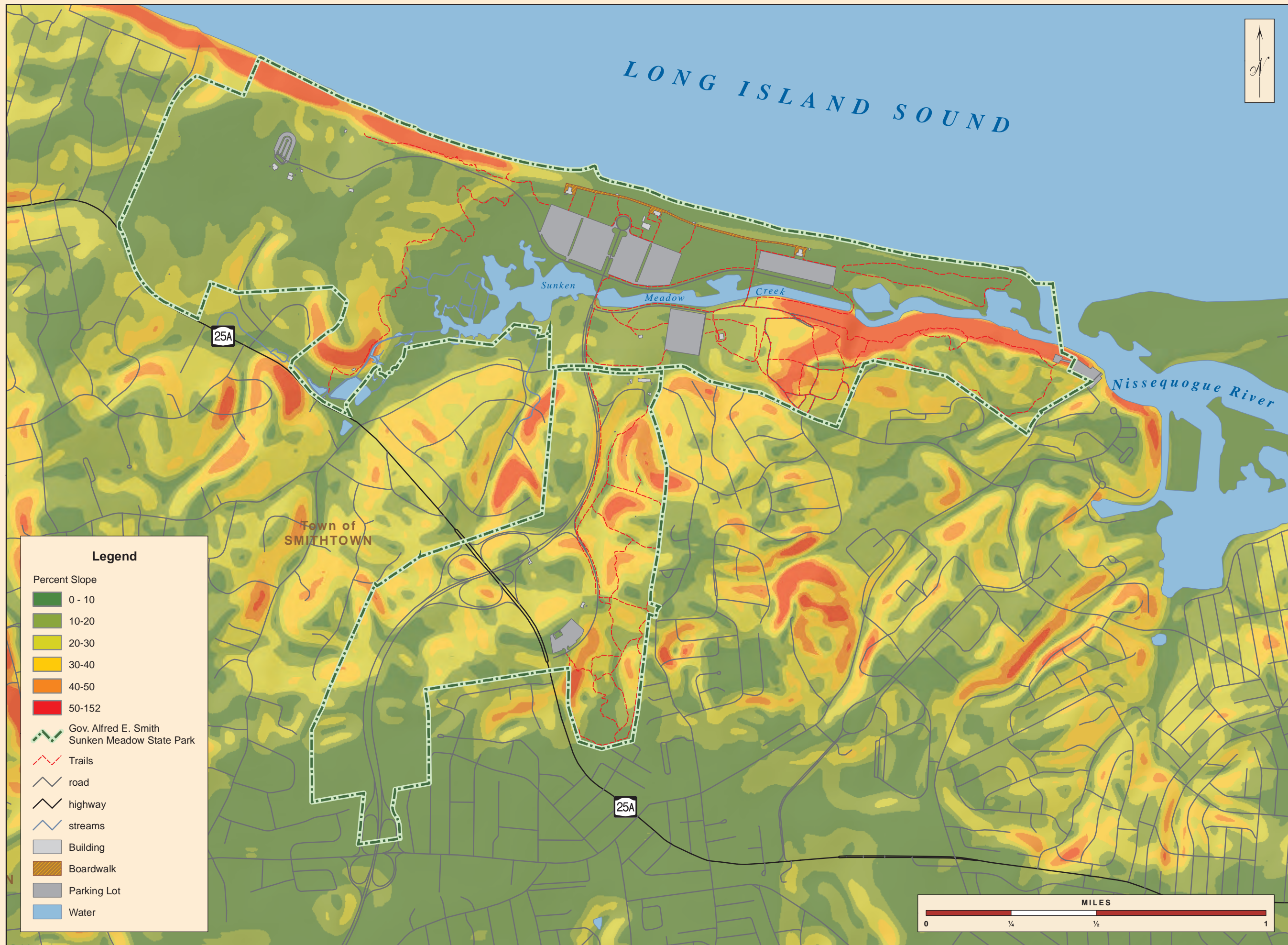
Master Plan
Figure #6

Boundary and Topography

Governor Alfred E. Smith/ Sunken Meadow State Park



Map produced by NYSOPRHP GIS Bureau, October 03, 2014.



Legend

Percent Slope

- 0 - 10
- 10-20
- 20-30
- 30-40
- 40-50
- 50-152

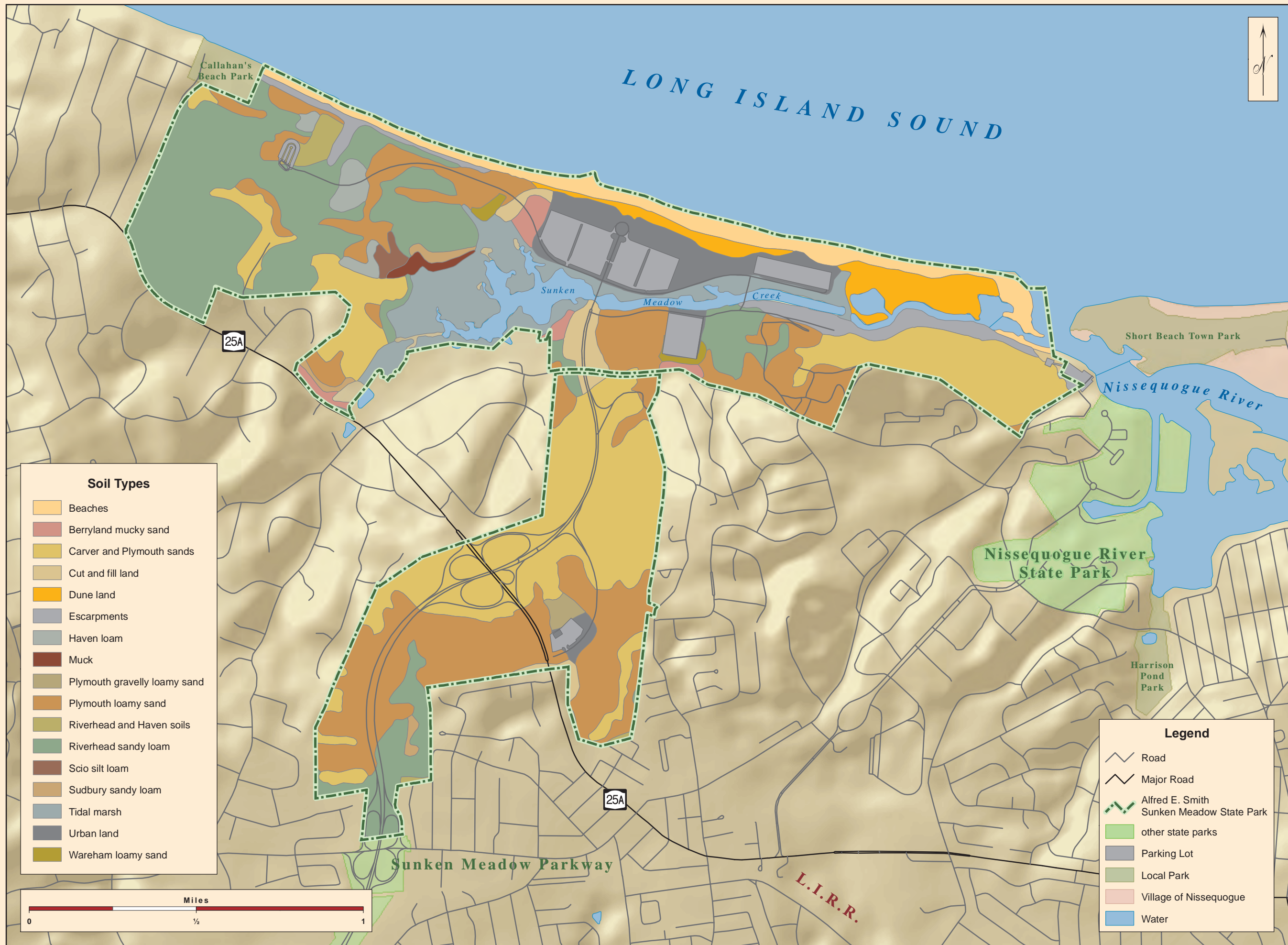
- Gov. Alfred E. Smith Sunken Meadow State Park
- Trails
- road
- highway
- streams
- Building
- Boardwalk
- Parking Lot
- Water

Master Plan
Figure #7

Slope Analysis
Governor Alfred E. Smith/
Sunken Meadow State Park

Map produced by NYSOPRHP GIS Bureau, October 03, 2014.





Soil Types

Beaches
Berryland mucky sand
Carver and Plymouth sands
Cut and fill land
Dune land
Escarpments
Haven loam
Muck
Plymouth gravelly loamy sand
Plymouth loamy sand
Riverhead and Haven soils
Riverhead sandy loam
Scio silt loam
Sudbury sandy loam
Tidal marsh
Urban land
Wareham loamy sand

Legend

Road
Major Road
Alfred E. Smith Sunken Meadow State Park
other state parks
Parking Lot
Local Park
Village of Nissequogue
Water

Master Plan

Figure #8

Soil Types
Governor Alfred E. Smith/
Sunken Meadow State Park

Map produced by NYSOPRHP GIS Bureau, October 03, 2014.

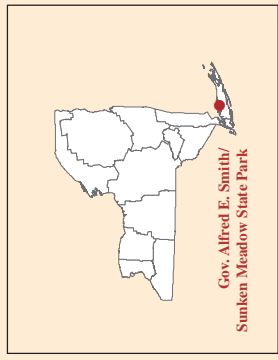


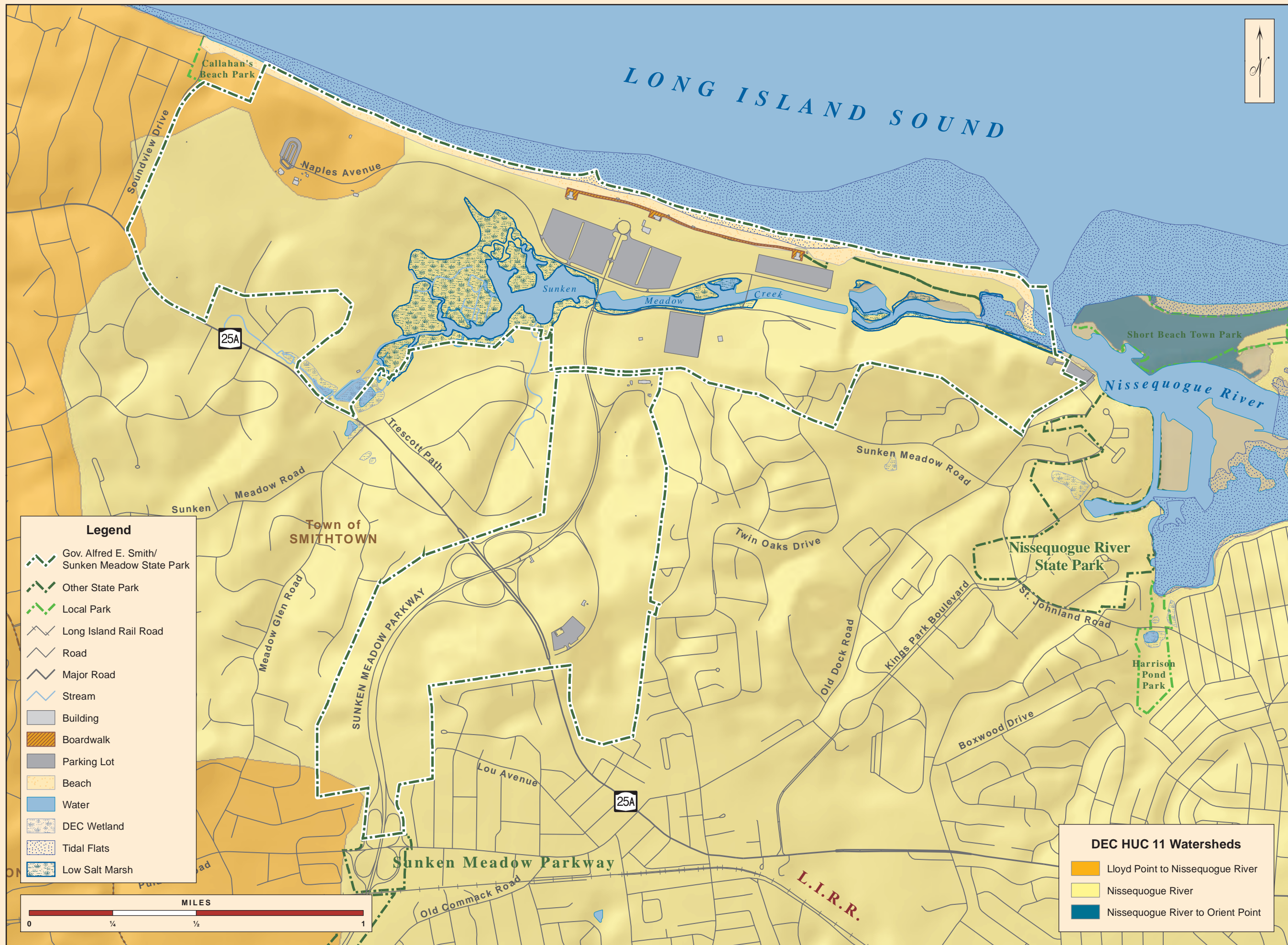


Master Plan
Figure #9

Surficial Geology Governor Alfred E. Smith/ Sunken Meadow State Park

Map produced by NYSOPRHP GIS Bureau, October 03, 2014.



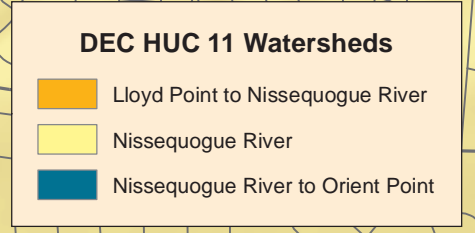


Master Plan

Figure #10

Water Resources Governor Alfred E. Smith/ Sunken Meadow State Park

Map produced by NYSOPRHP GIS Bureau, October 03, 2014.



Gov. Alfred E. Smith/
Sunken Meadow State Park