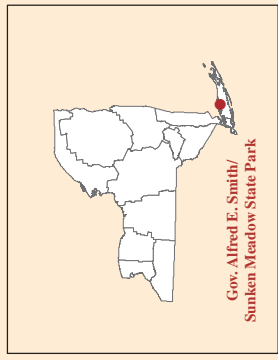




Master Plan
Figure #1

Vicinity Governor Alfred E. Smith/ Sunken Meadow State Park

Map produced by NYSOPRHP GIS Bureau, September 30, 2014.



Gov. Alfred E. Smith/
Sunken Meadow State Park



Master Plan
Figure #2

Zip Code Dot Density Governor Alfred E. Smith/ Sunken Meadow State Park



Map produced by NYSOPRHP GIS Bureau, September 30, 2014.



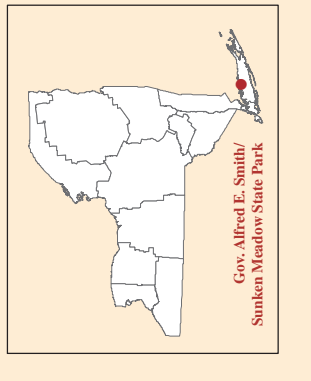
Trails		
Trail ID	Trail Name	Distance
GB	Green Belt Trail	1.3 miles
WT	Wetlands Trail	1.4 miles
UN	Unnamed Trail	8.2 miles
SW	Sidewalk	3.8 miles

Legend	
	Baseball Field
	Basketball Court
	Hand Boat Launch
	Playground
	Scenic View
	Marked Trail
	Unmarked Trail
	Sidewalk
	Kings Park Hike and Bike trail
	Long Island Rail Road
	Road
	Major Road
	Streams
	Water
	DEC Wetland
	Alfred E. Smith Sunken Meadow State Park
	Building
	Tee
	Fairway
	Green
	Sand Trap
	Designated Dog Area
	Boardwalk
	Parking Lot
	Swim Beach
	Beach
	DEC Land
	Other State Park
	Local Park
	Village of Nissequogue
	Wooded Area

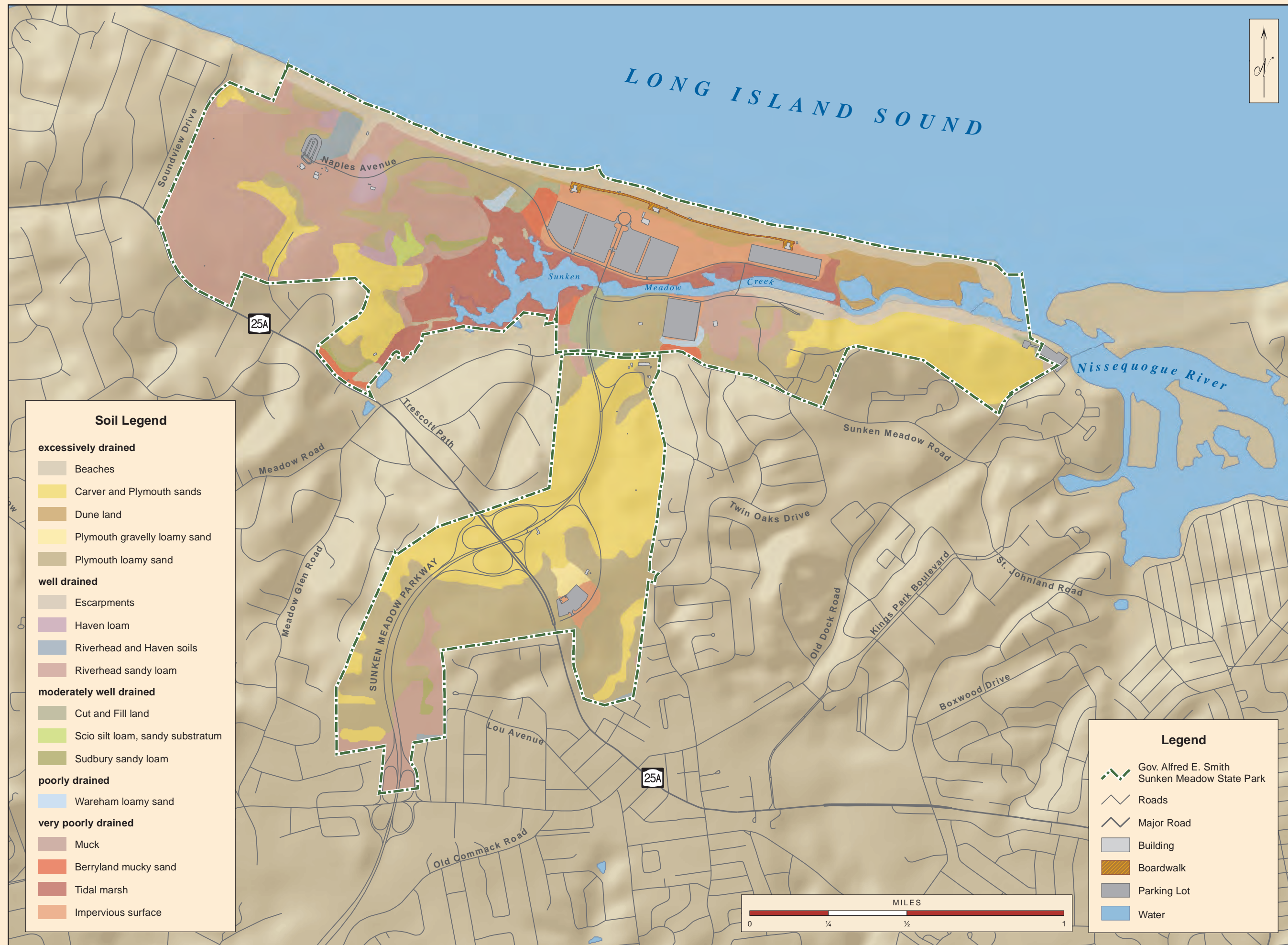
Master Plan
Figure #4

Trail / Recreation Map

Governor Alfred E. Smith/ Sunken Meadow State Park



Map produced by NYSOPRHP GIS Bureau, October 03, 2014.



Soil Legend

excessively drained	
	Beaches
	Carver and Plymouth sands
	Dune land
	Plymouth gravelly loamy sand
	Plymouth loamy sand
well drained	
	Escarpments
	Haven loam
	Riverhead and Haven soils
	Riverhead sandy loam
moderately well drained	
	Cut and Fill land
	Scio silt loam, sandy substratum
	Sudbury sandy loam
poorly drained	
	Wareham loamy sand
very poorly drained	
	Muck
	Berryland mucky sand
	Tidal marsh
	Impervious surface

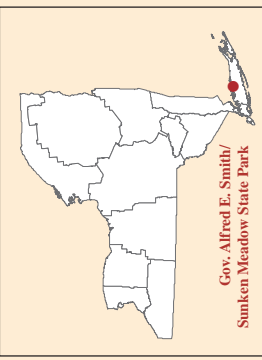
Legend

	Gov. Alfred E. Smith Sunken Meadow State Park
	Roads
	Major Road
	Building
	Boardwalk
	Parking Lot
	Water



Soil Drainage
Governor Alfred E. Smith/
Sunken Meadow State Park

Master Plan
 Figure #5



Map produced by NYSORHP GIS Bureau, October 03, 2014.