

John Brown Farm State Historic Site Public Information Meeting

Wednesday, February 08, 2023
7:00 pm - Virtual

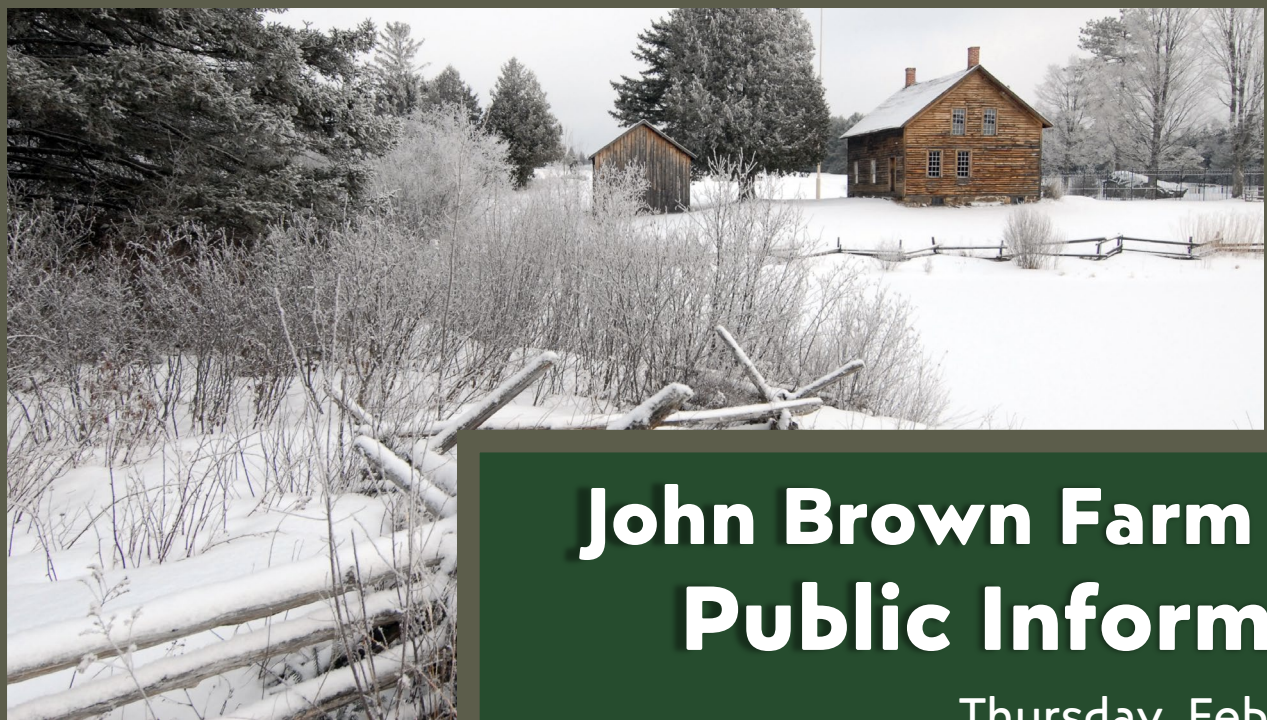


Parks, Recreation
and Historic
Preservation

Department of
Environmental
Conservation

Adirondack
Park Agency





John Brown Farm State Historic Site Public Information Meeting

Thursday, February 09, 2023
10:00 am - Virtual



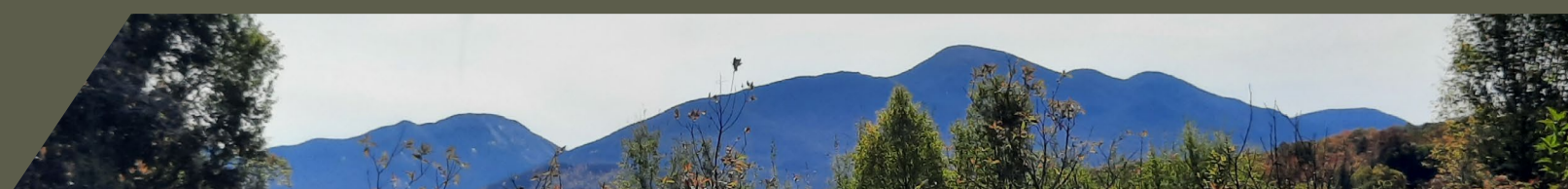
NEW
YORK
STATE

Parks, Recreation
and Historic
Preservation

Department of
Environmental
Conservation

Adirondack
Park Agency





Audio:

- You're muted automatically when entering the meeting.
- During Public Comment, you may raise your virtual hand to be unmuted to ask a question/share a comment.

Chat:

- You can write a question/comment in the chat box anytime during the presentation.



**Closed Captions
are enabled**

**Click to leave
the event**



**Chat button
for questions**



**Red when
muted**



**Click the "hand" icon
to be unmuted by staff**



Welcome

Alane Chinian, NYS Parks Regional Director





Today's Agenda

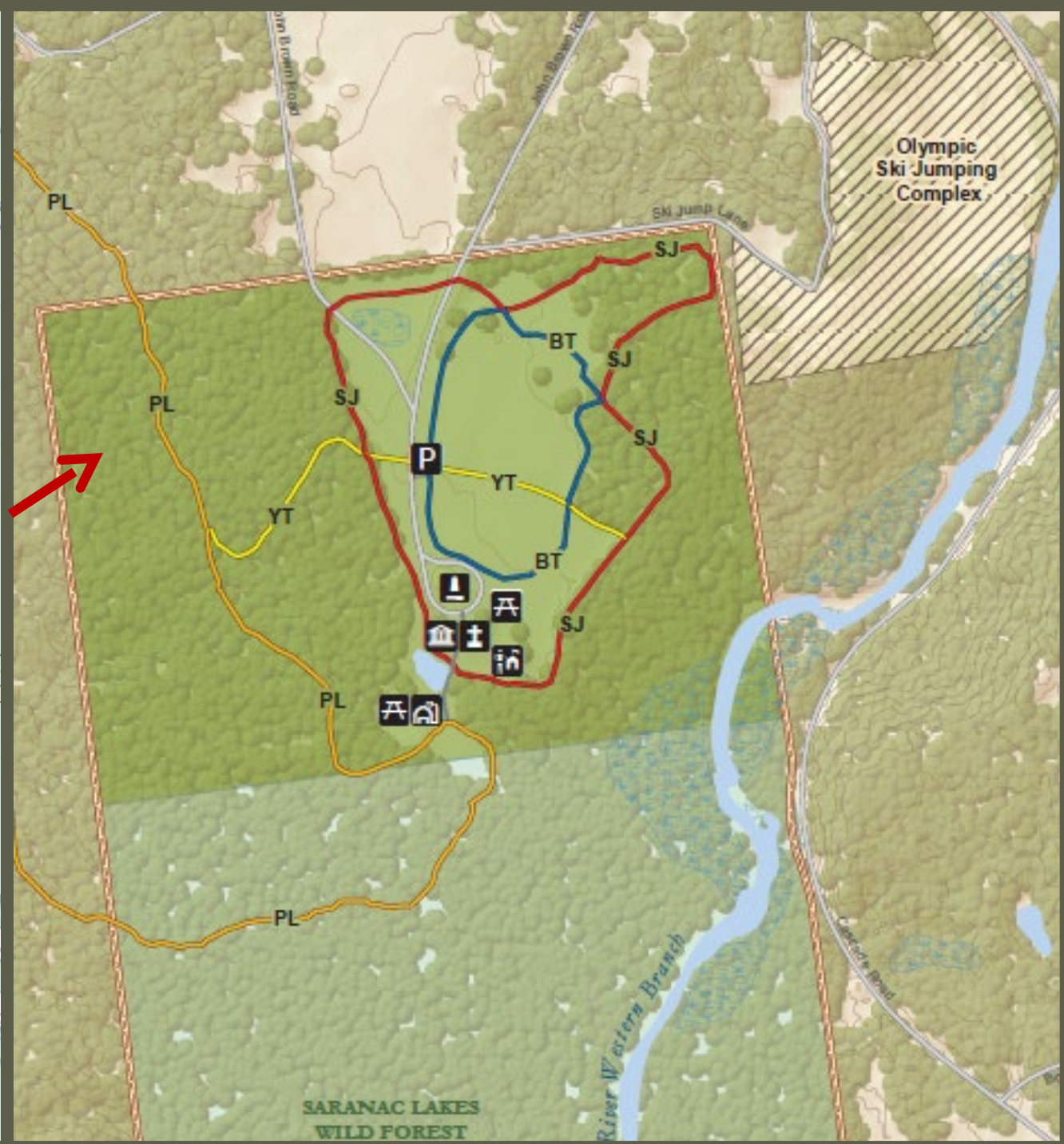
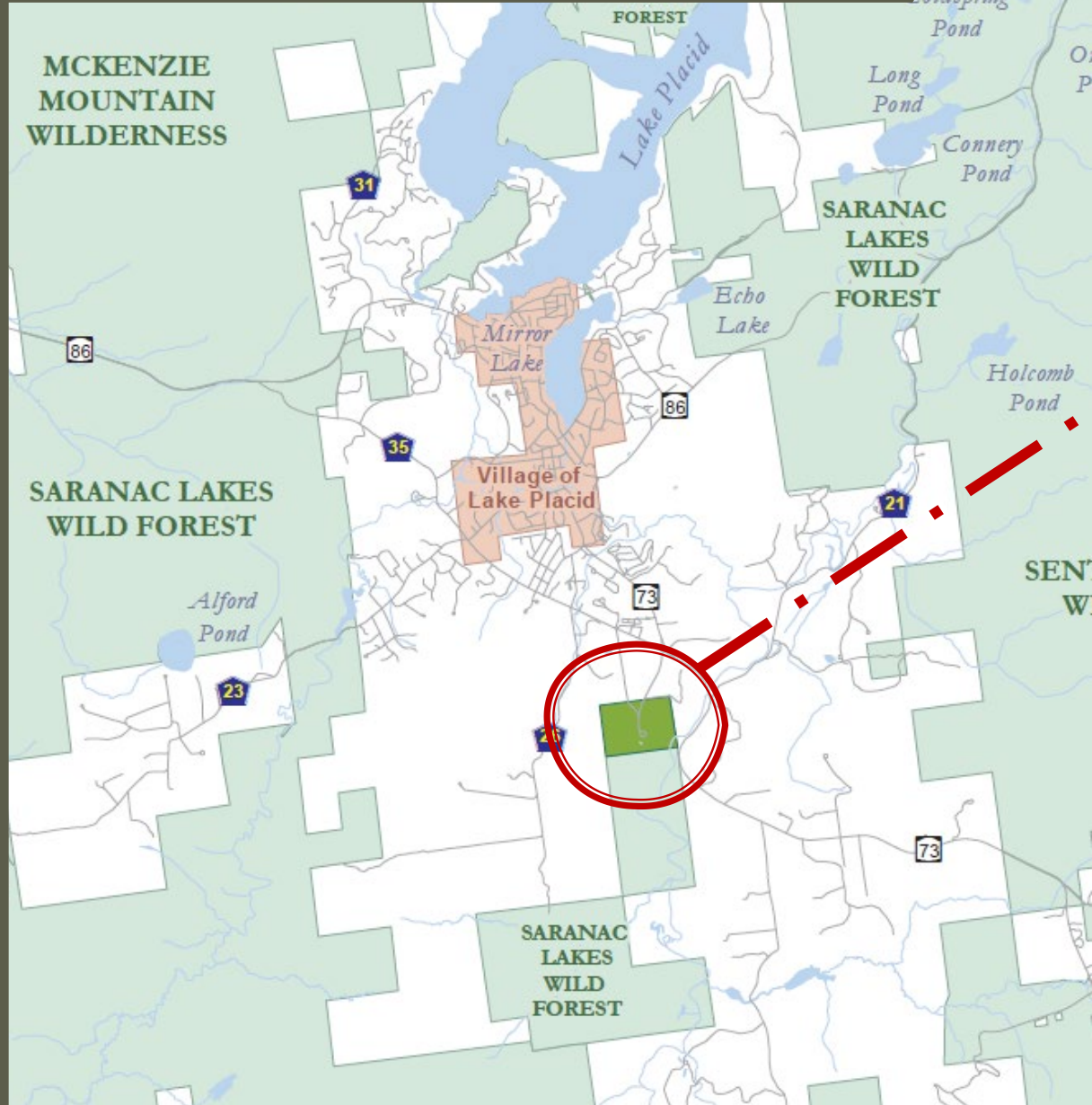
Public Information Meeting

- *Welcoming Remarks*
- What is a Unit Management Plan?
- Adirondack Park State Land Master Plan
- Overview of John Brown Farm SHS
- UMP Planning Timeline
- Public Comment





John Brown Farm SHS





Unit Management Plan (UMP)

What Is It?

- Sets forth the management objectives for the protection and rehabilitation of the Historic Site's cultural, natural, and recreational resources consistent with carrying capacity.
- Helps agencies to better meet the needs and interests of visitors.
- Developed in compliance with the **Adirondack Park State Land Master Plan.**





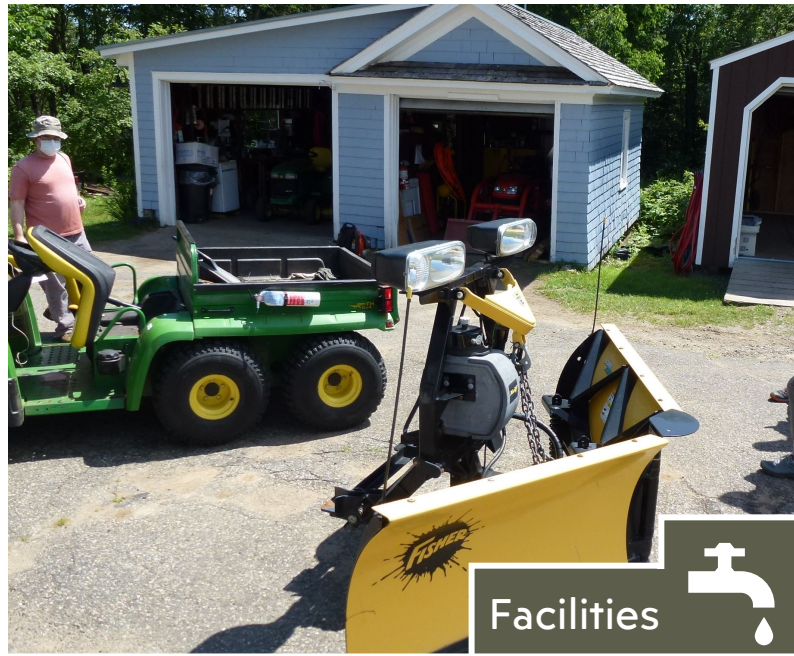
Unit Management Plan

Development Process

- Assemble interdisciplinary, interagency team
- Inventory and assess the site's cultural, natural, and recreational resources
- Obtain and integrate public input
- Identify opportunities for use and recreation
- Consider the ability of the resources and ecosystems to accommodate public use
- Create management objectives consistent with land management guidelines



Management Topics Overview



Management Topics Overview



Programming



Sustainability



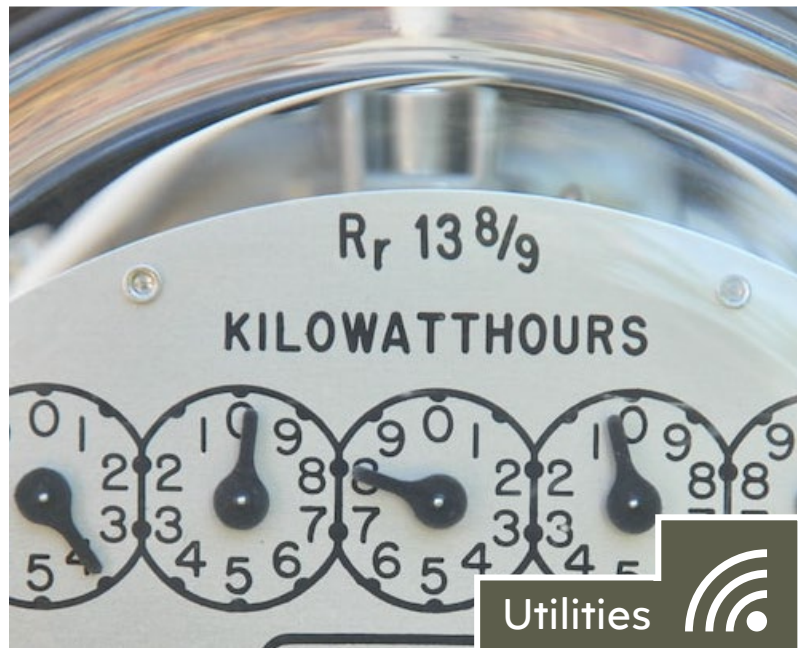
Accessibility



Staffing



Signage



Utilities

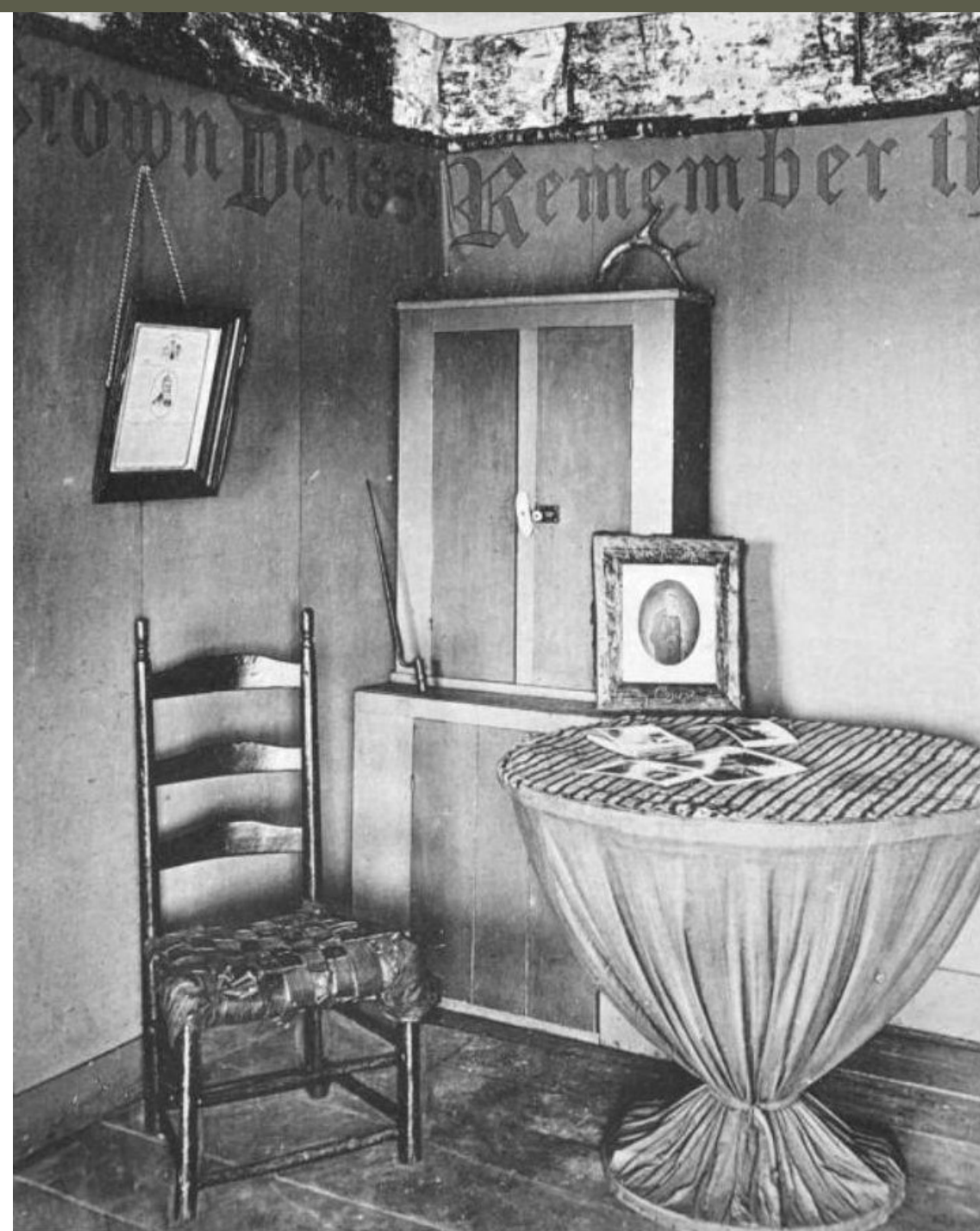


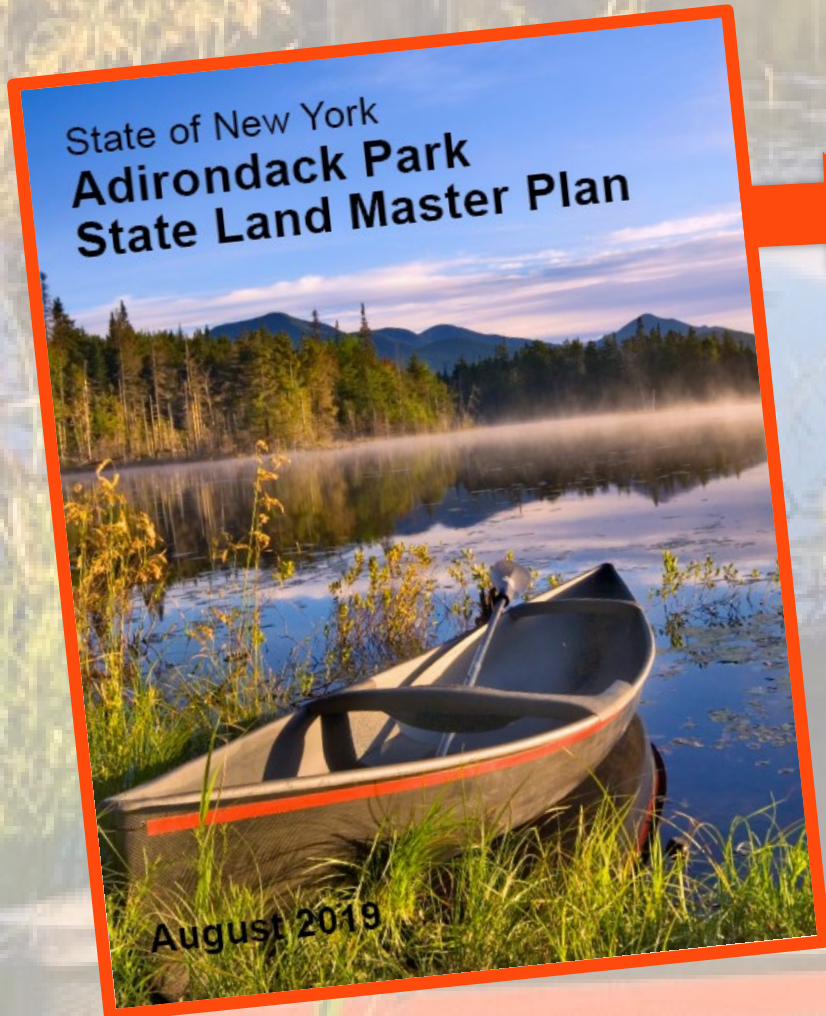


Unit Management Plan

Approval Process

- Release Draft UMP/DEIS for public comment (*minimum 30 days of comment*)
- Review public comments and revise Draft UMP/DEIS as appropriate
- Provide Final Draft UMP & DEIS to APA Board for review
- Public review of Final Draft UMP/DEIS
- Determination by APA Board
- Commissioners approve Final UMP/FEIS





HISTORIC

Definition

Historic areas are locations of buildings, structures or sites owned by the state (other than the Adirondack Forest Preserve itself) that are significant in the history, architecture, archeology or culture of the Adirondack Park, the state or the nation; that fall into one of the following categories;

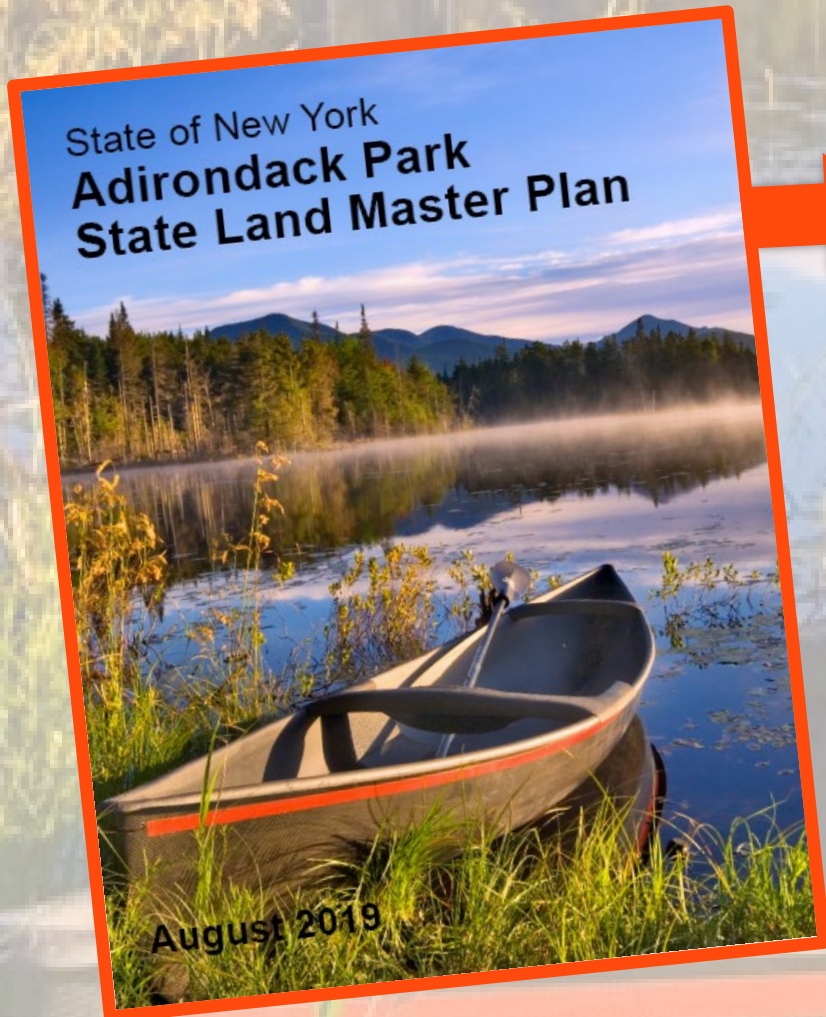
- state historic sites;
- properties listed on the National Register of Historic Places;
- properties recommended for nomination by the Committee on Registers of the New York State Board for Historic Preservation; and that are of a scale, character and location appropriate for designation as an historic area under this master plan and the state has committed resources to manage such areas primarily for historic objectives.

Designation of Historic Areas

Five historic areas, Crown Point, John Brown's Farm, Camp Santanoni, Hurricane Mountain Fire Tower and St. Regis Mountain Fire Tower result from the application of the above criteria and are delineated on the map forming part of this master plan.



Adirondack Park State Land Master Plan



HISTORIC

Definition

Historic areas are locations of buildings, structures or sites owned by the state (other than the Adirondack Forest Preserve itself) that are significant in the history, architecture, archeology or culture of the Adirondack Park, the state or the nation; that fall into one of the following categories;

- state historic sites;
- properties listed on the National Register of Historic Places;
- properties recommended for nomination by the Committee on Registers of the New York State Board for Historic Preservation; and that are of a scale, character and location appropriate for designation as an historic area under this master plan and the state has committed resources to manage such areas primarily for historic objectives.

Designation of Historic Areas

Five historic areas, Crown Point, John Brown's Farm, Camp Santanoni, Hurricane Mountain Fire Tower and St. Regis Mountain Fire Tower result from the application of the above criteria and are delineated on the map forming part of this master plan.

Guidelines for Management and Use

Basic guidelines

1. The primary management guidelines for historic areas will be to preserve the quality and character of the historic resources, that is, to the greatest extent feasible, in a setting and on a scale in harmony with the relatively wild and undeveloped character of the Adirondack Park.

2. All historic areas will be designed, managed and interpreted so as to blend with the Adirondack environment and have the minimum adverse impact possible on surrounding state lands and nearby private holdings.

3. Construction and development activities in historic areas will:

- avoid material alteration of wetlands;
- minimize extensive topographical alterations;
- limit vegetative clearing; and,
- preserve the scenic, natural and open space resources of the historic area.

4. Each historic area will be designed, managed and interpreted in conformity with a special historic area unit management plan for the area, filed with and approved by the Agency after public hearing as being consistent with this master plan. Special unit management plans will be prepared in consultation with the Agency for the two existing historic areas as soon as possible. No new structures or improvements at existing or proposed historic areas will be constructed prior to the approval of such special unit management plans. Such structures and improvements will conform to this master plan and special historic area unit management plans.



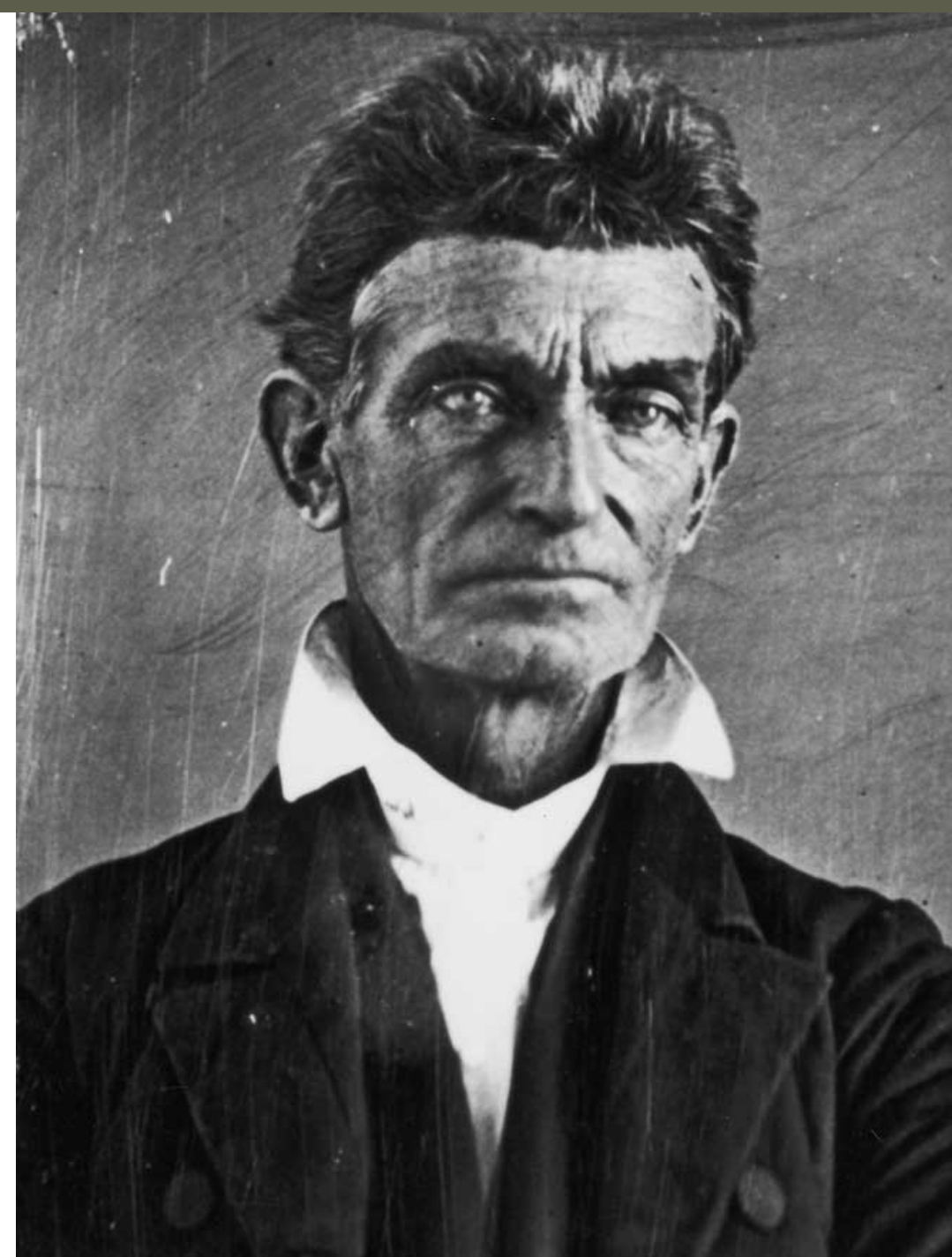
John Brown Farm SHS





Timeline

- **1800:** Born in Connecticut
- **1849:** Purchases 270 acres of land in North Elba to assist free Black families who settled "Timbuctoo"
- **1855:** Leaves North Elba to join anti-slavery campaign in Kansas Territory
- **1859**
 - Oct. 16 – 19:**
Leads armed raid at Harpers Ferry, and is captured after three days
 - Oct. 27 – 31:**
Trial by grand jury; found guilty on all charges
 - Dec. 2:**
Executed in Charles Town, present-day West Virginia
 - Dec. 8:**
Buried in North Elba
- **1866:** Mary Brown sells the farm





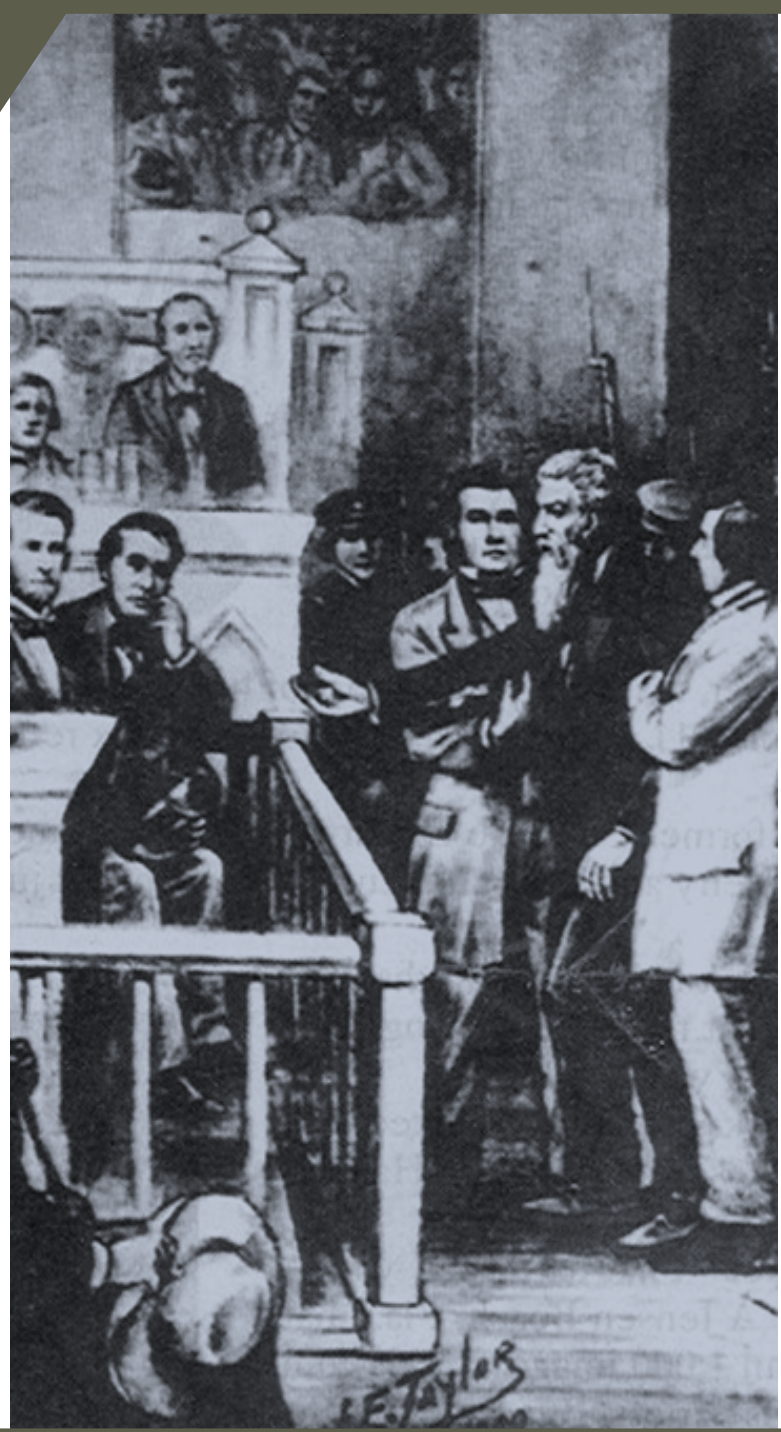
State Historic Site



Deeded to New York State
July 1896

Estimated Site Attendance
2020-21: 74,936
2021-22: 56,347

Site Recognition



**National Register of
Historic Places**
June 19, 1972

**National Historic
Landmark**
August 6, 1998

**NPS Underground Railroad
Network to Freedom Site**
October 18, 2022

Present Day

Planning Team (aka Core Team)

NYS Office of Parks, Recreation and
Historic Preservation

New York State Department of
Environmental Conservation

Adirondack Park Agency

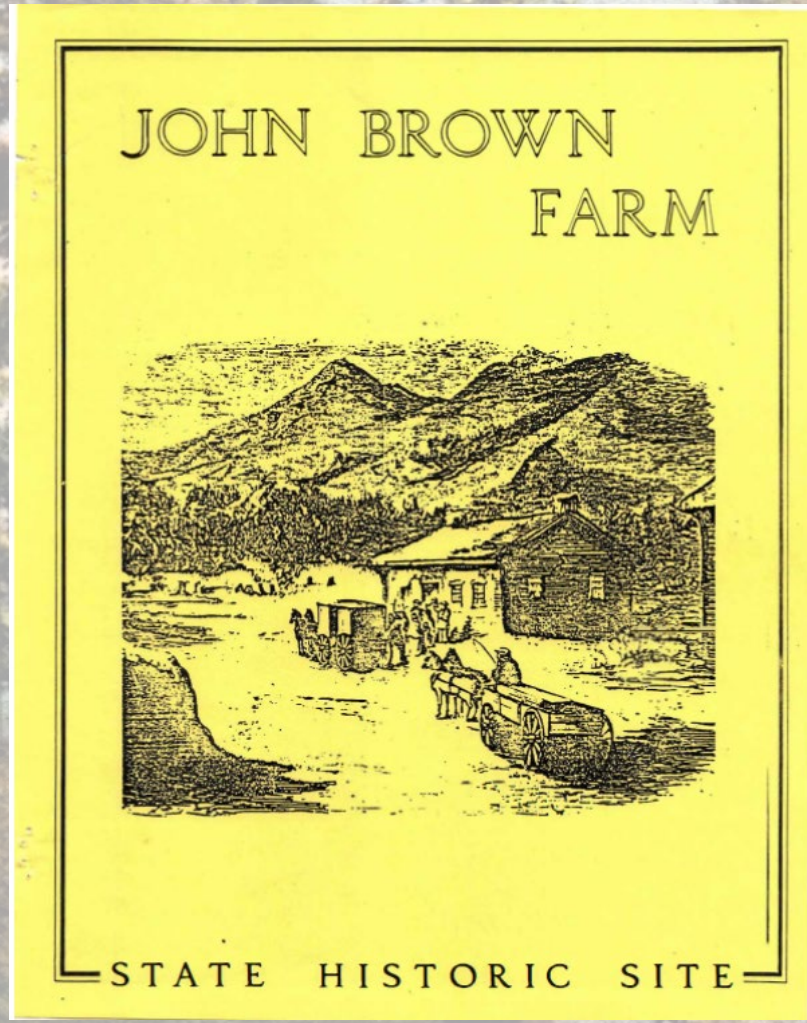
John Brown Lives!





Previous Planning

JOHN BROWN INTERPRETIVE CENTER



Plans to Alter John Brown Memorial Arouse Protest Upstate

By HAROLD FABER
Special to The New York Times

LAKE PLACID, N.Y. — Since 1859, John Brown's body has been a moldering in the grave here, far from his anti-slavery campaigns in Ossawatimie, Kan., and his raid on the Federal arsenal in Harpers Ferry, Va., that led to his capture and hanging.

He and 12 of his followers are buried in a grassy field on the farm that he bought in a peaceful Adirondack Mountain valley in the town of North Elba, two miles from Lake Placid, to provide free blacks from the South a place to work and become self-sustaining farmers.

Today, the serene atmosphere of this farm, now a state historic site, is a battleground between state officials who want to improve it at a cost of \$500,000 by constructing a visitor's orientation center and other facilities and local residents who want to preserve it as the simple memorial that it now is.

At present, the farm contains the graves, with a memorial plaque mounted on a huge boulder, surrounded by an iron fence, a small farmhouse and a caretaker's cottage. At the entrance to the 24-acre farm is a bronze statue of Brown, his arms resting on the shoulder of a black boy, with the inscription "His Soul Goes Marching On."



The New York Times/Paul Reafer

To the north is a clear view of Whiteface Mountain. To the south, Mount Marcy, the highest peak in the Adirondacks, stands out in the sky. The only intrusive notes in the rural atmosphere are the stark concrete towers for the 70-meter and the 90-

meter ski jumps, now being completed in time for the 1980 Winter Olympic Games, only a few hundred yards away.

Those towers caused a minor controversy two years ago when the ski-jump site was selected. Opponents called their construction "visual pollution" of the historic site, but they were overruled.

In the new controversy, the State Office of Parks and Recreation, which administers the farm, is planning to erect an interpretive center for visitors, build a paved parking lot, install benches and picnic tables, enlarge the sewer system and expand the staff of one caretaker to five permanent employees.

"This is the only site in the state that has anything to do with the Civil War,"

John Brown's body lies in graveyard to the right of house on farm that he bought in North Elba, N.Y. Olympic ski-jump towers are visible in background.

according to Frederic L. Rath Jr., head of the State Division of Historic Preservation.

Doug Stringer, local president of the John Brown Memorial Association, said: "It's a desecration. It's horrible to think of people trampling over the grave, discarding beer cans and soda cans and litter. It would spoil the whole thing."

Before any construction work can begin, the Office of Parks and Recreation must get permission from the Adirondack Park Agency to reclassify the site from "wild forest" to "intensive use" and then, in a separate proceeding, get approval for the new construction. So far, no formal application has been made.

In fact, according to some local observers, the parks office is now heeding a quiet retreat in the face of unexpected local opposition and is delaying its application.

The Lake Placid News recently reported an outpouring of letters and petitions of protest from all parts of the country. One letter was from Eleanor Blangsted of Oceanside, Calif., who wrote:

"I am horrified at the idea of chopping up my great, great-grandfather's farm. Please do everything you can to leave it intact — I am speaking now as one of the owners of John Brown's grave."

1978

1988



John Brown Farm 2023



 **Historic and Cultural Resources**





Natural Resources & Stewardship





Recreation





Interpretation & Education





2021-2022 Public Programs



Winter

First Day Hike
Stargazing
Full Moon Hike
Sleigh Rides

Spring

Guided Cemetery Tour
John Brown Day
John Brown Birthday
Memorial Wreath Laying



John Brown
LIVES!
a freedom education and human rights project



Summer

Juneteenth
Adirondack Family Book Festival
July 4th Celebration
Civil War Demo' Encampment

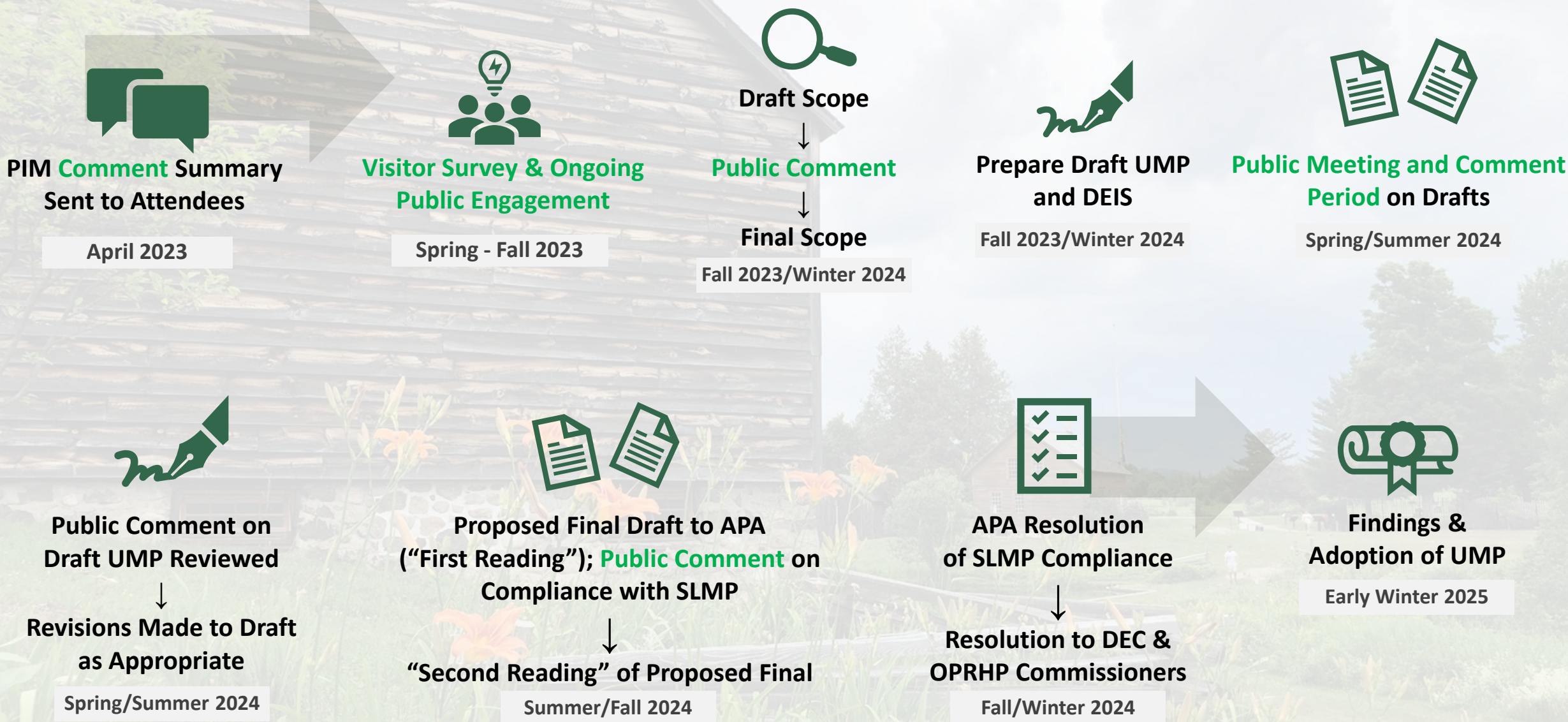
Fall

Blues at Timbuctoo
Path Through History Weekend

Existing Facilities & Infrastructure



Project Timeline






Public Comment

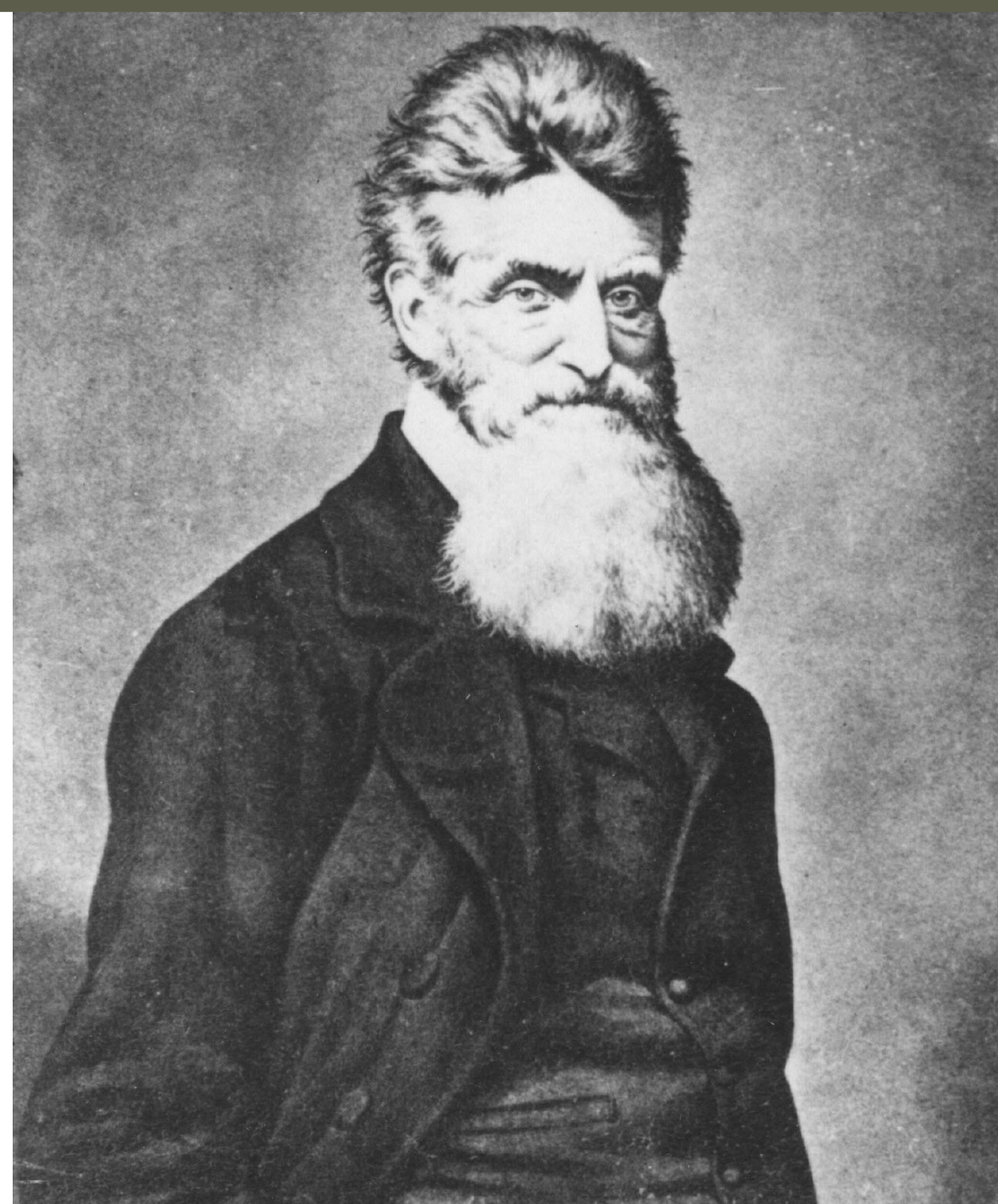
Rules of Engagement

Guidelines

- We are here to listen!
- All ideas and suggestions welcome.
- Questions to help define input are okay.

Reminders

- Raise your hand to speak: 
- Introduce yourself when called upon.
- Please limit your comments to no more than 2 minutes to ensure everyone has an opportunity to speak.





We Want to Hear from You!

**E-mail comments by
Monday, March 13, 2023, to:**

JohnBrownFarm.Plan@parks.ny.gov

**Postmark written comments by
Monday, March 13, 2023, to:**

Paige Barnum, Senior Planner
NYS OPRHP
625 Broadway, 2nd Floor
Albany, New York 12238

