

Oquaga Creek State Park

5995 County Highway 20, Bainbridge, NY 13733

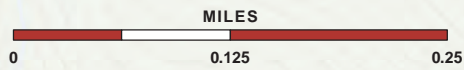
Legend

- Bathhouse
- Beach
- Boat Launch
- Bridge
- Campsites
- Cottage
- Disc Golf
- Dumping Station
- Handicap Accessible
- Maintenance Shop
- Nature Trail Signs
- Park Office
- Parking Area
- Picnic Area
- Public Restroom
- Swingset
- Telephone
- Volleyball Court
- Water Spigot
- Roads
- Access Road
- Marked Trail color varies
- Sidewalk
- County Boundary
- 10' Contour
- Stream
- Beach
- Building
- Parking
- Disc Golf Course
- State Park Land
- Water

Park Trails

Trail Use	Trail ID	Name	Length
	NT	Nature Trail	0.3 miles
	SH	Short Trail	2.0 miles
	ST	Ski Trail	4.6 miles
	TL	Lake Trail	1.2 miles
	UN	Unnamed Trails	2.3 miles

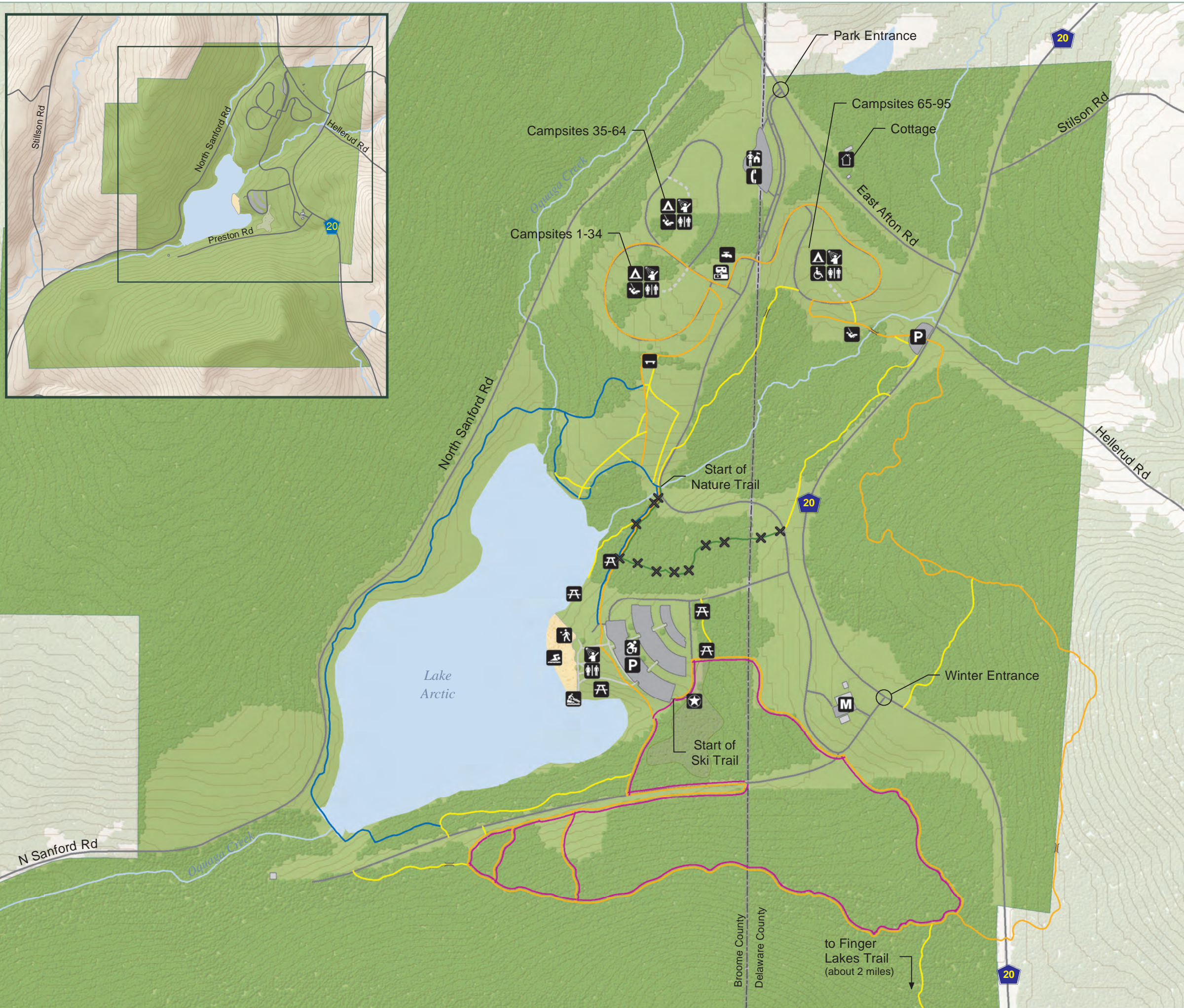
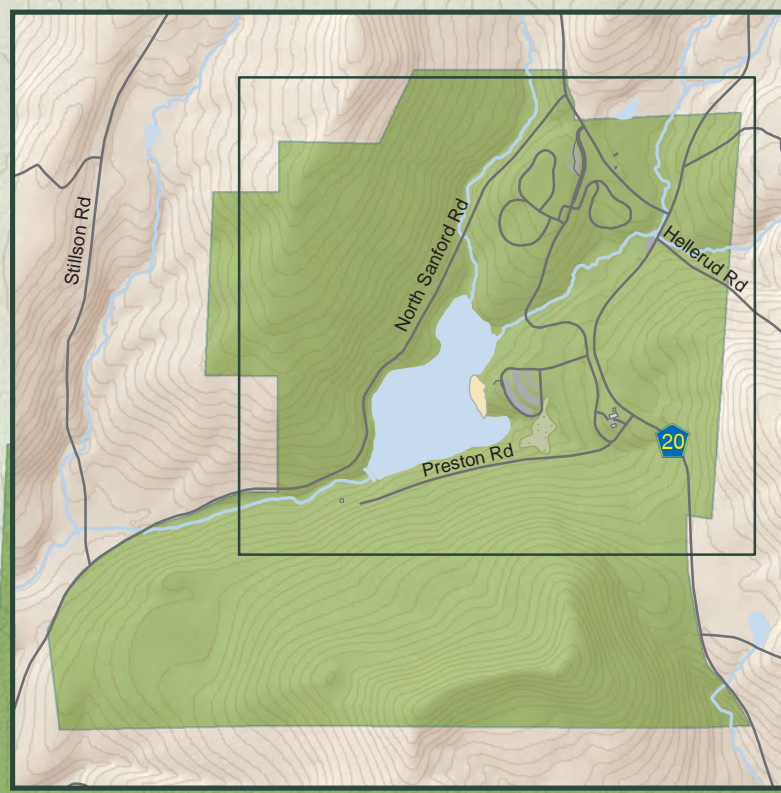
Hiking
 Snowshoeing
 Cross Country Skiing



Please be considerate of other park users.
Please report any accident or incident immediately to park police.
All boundaries and trails are shown as approximate.
Be aware of changing trail conditions.

Park Office: (607) 467-4160
Central Regional Office: (315) 492-1756
State Park Police: (315) 492-6422
In Case of Emergency: 1 (877) 851-6086 or 911

Map produced by NYSOPRHP GIS Bureau, July 17, 2023.



Broome County
Delaware County

to Finger Lakes Trail
(about 2 miles)

