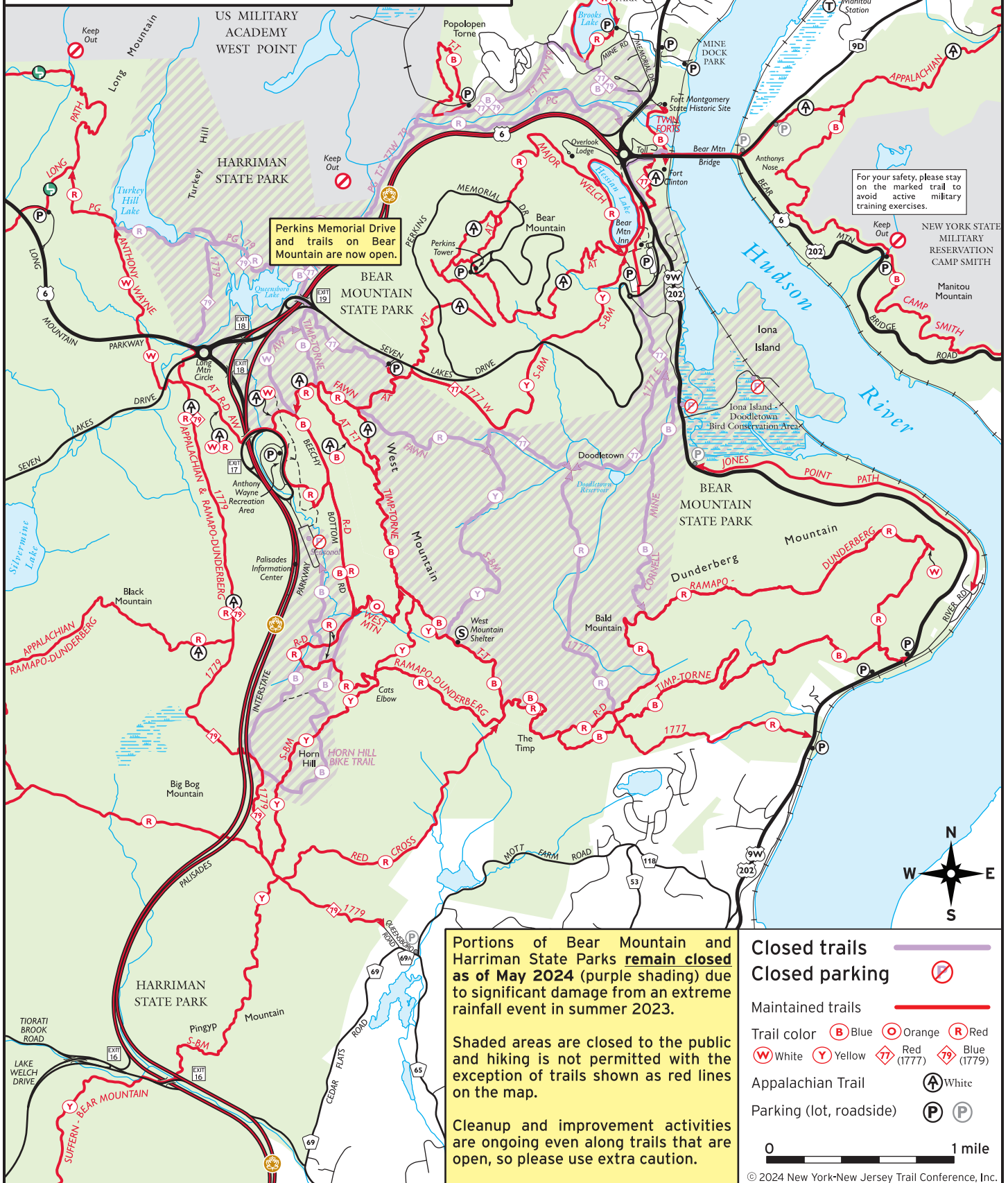




# Bear Mountain Area Trail Status

Updated: May 2024



Perkins Memorial Drive and trails on Bear Mountain are now open.

For your safety, please stay on the marked trail to avoid active military training exercises.

Portions of Bear Mountain and Harriman State Parks remain closed as of May 2024 (purple shading) due to significant damage from an extreme rainfall event in summer 2023.

Shaded areas are closed to the public and hiking is not permitted with the exception of trails shown as red lines on the map.

Cleanup and improvement activities are ongoing even along trails that are open, so please use extra caution.

- Closed trails
- Closed parking
- Maintained trails
- Trail color: B (Blue), O (Orange), R (Red), W (White), Y (Yellow), 1777 (Red), 1779 (Blue)
- Appalachian Trail: A (White)
- Parking (lot, roadside): P (lot), P (roadside)