

Designations:
 A Bird Conservation Area and a Natural Heritage Area will be designated in the Park.

- Bird Conservation Area – designate the entire Park as a BCA
- Natural Heritage Area – designate the entire Park as an NHA

Fishing

- Continue to protect the habitat of native fish and provide fishing access to all water bodies in the Park
- Provide additional fishing access to Roeliff Jansen Kill near junction of Orphan Farm Road and NY Rt. 22
- Explore viability of fishing at Odyssey Farm Pond and providing ADA compliant fishing

Copake Falls Camping:

- Build a new camping loop and relocate several campsites from existing camping loops to decrease density; include ADA campsites; total number of sites remains the same
- Add electric and water services at selected campsites
- Add wi-fi access hotspot for campground
- Provide dog run for campers at Copake Falls
- Relocate Copake Falls dump station

Copake Falls Day Use Area:
 Develop a Site Plan that incorporates improvements for recreational opportunities and ADA compliance, including:

- Build new picnic pavilion in addition to the existing one to meet visitor demand
- Install ball field to play a variety of sports games and seasonal ice skating rink
- Build large fire ring as a gathering and outdoor educational space
- Add to playground to accommodate children 3-6 years old
- Make minor improvements to the picnic area including new tables, benches, and grills
- Plant trees in and around day use area to provide more shade and comfort
- Provide wi-fi hotspots at Park Office and Copake Iron Works Museum

Copake Falls Comfort Stations and Shower Houses:

- Renovate all three existing comfort stations
- Build a new shower house and septic in a central location for all camping loops, then renovate existing shower house, thus at least doubling shower capacity for campgrounds
- Renovate Ore Pit Pond Bath House: install electricity and telephone service, add outside shower towers, make ADA compliant

Copake Falls Cabins and Cottages:

- Improve Copake Ironworkers Cabins one cabin at a time, make them ADA compliant, and provide a wi-fi hotspot for them
- Improve Bash Bish Cabins and bath house
- Improve Greenwich Cottages: renovate former Rec Hall into a Meeting Hall for large gatherings and events; repurpose the former caretaker's cottage to house interns

Group Camping:

- Group camping areas will be designated in both Copake Falls and Rudd Pond developed areas for the off season

Backcountry Camping:

- Backcountry campsite will be designated along the South Taconic Trail south of Brace Mountain to accommodate long distance hikers and backpackers
- Backcountry campsites will be carry in-carry out sites, with the single amenity of a bear box to secure food overnight

Construction Practices:

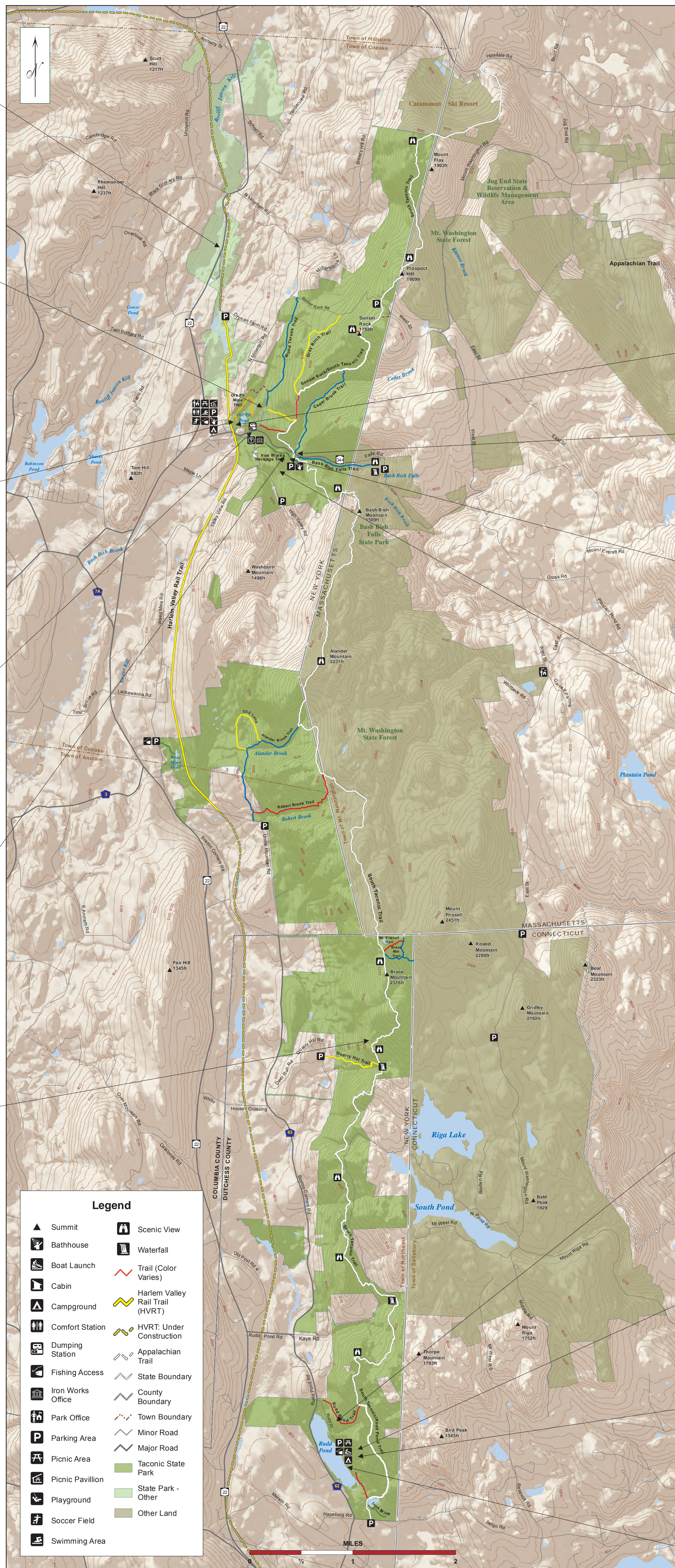
- Shall be considerate of the landscape, historic character and vegetation
- Implement sustainable practices wherever possible
- Continue consultation with SHPO concerning NRE structures and ground disturbance during construction

Design Guidelines:

- The design character will be rustic and cognizant of the surrounding natural features and history of the area
- Implement sustainable practices whenever possible

Interpretation and Education:

- Continue to foster a sense of environmental stewardship through hands-on interpretive programming
- Focus programs on topics including but not limited to biodiversity, native and invasive species, cultural and historical resources, climate change, and sustainability
- Explore opportunities to hire seasonal interpretive staff with housing at the Park
- Coordinate interpretation and education from the Park Office



Trails: □
 For trail improvement proposals, see Trails Plan Map

Sustainability:

- Explore and incorporate sustainable and ecologically sensitive concepts and practices wherever practical in all aspects of the Park, including operations, management, design, construction and education
- Continue the Park's recycling program
- Use native plants for revegetation whenever possible, continue reduced mowing, do not use pesticides or chemical treatments unless it becomes absolutely necessary, use certified weed-free straw for erosion control

Natural Resources:

- Develop and implement an Invasive Species Management Plan throughout the Park
- Manage Rudd Pond to control invasive plant growth in order to continue to provide recreational opportunities

Hunting:

- Add shotgun hunting for turkey during spring and fall seasons in specific areas of the Park and expand fall turkey hunting to sunrise to sunset in same areas; allow black bear hunting as appropriate; and designate an area for small game hunting in a manner that allows for monitoring impacts to New England cottontail
- All DEC hunting regulations for Columbia and Dutchess Counties will be followed

Harlem Valley Rail Trail Parking by Park Headquarters:

- Modify parking: first introduce honor system paystations, then limit parking to Empire Pass holders and ADA tagged vehicles

Bash Bish Falls trailhead:

- Work with DOT and create a more efficient, safer and formalized parking lot
- Introduce pay stations at Bash Bish Falls and encourage patrons to use the parking area at Copake Falls

Copake Iron Works:

- Continue to protect and interpret the Copake Iron Works Historic District and National Heritage Area Designated Site in cooperation with OPRHP's Division of Historic Preservation and the Friends of Taconic State Park
- Move maintenance facility out of current Copake Iron Works – era building to new location, away from the Copake Iron Works Historic District
- Expand education and interpretation of this significant cultural resource

Park Maintenance Facility:

- Construct new maintenance facility in proposed Copake Falls area and construct culvert or small bridge over stream for access to new location

Mutual Aid Agreement with Massachusetts DCR:

- Sign mutual aid agreement with Massachusetts Department of Conservation and Recreation (DCR) and thus provide legal framework for the mutual aid operations that de facto exist between NY and MA park staff

Signage for Taconic State Park:

- Work with DOT to coordinate better wayfinding signage
- Utilize forthcoming statewide signage plan for internal Park signage

Rudd Pond Day Use Area:

- Follow proposed Site Plan to improve day use area
- Manage the pond and swimming area to provide recreational swimming and boating
- Adjust traffic circulation pattern for easier access and exit
- Provide wi-fi hotspot at Rudd Pond
- Add to playground to accommodate children 3-6 years old
- Reroute base of Rudd Pond trail to Rudd Pond parking area
- Remove staff trailer after day use area comfort station is remodeled as staff work station

Rudd Pond Camping:

- Change campsite layout to allow for more privacy; sites can be staggered and tucked into the adjacent woods. No net increase in campsites

Rudd Pond Comfort Stations and Shower Houses:

- Remodel the bath house as picnic pavilion and comfort station
- Remodel the day use area comfort station as staff work station
- Upgrade campground comfort station for code and ADA compliance
- Upgrade water distribution system

Rudd Pond Swimming:

- Provide swimming at Rudd Pond and explore alternatives to current pond management that allow for continued swimming
- Rudd Pond is transitioning to wetland; Park will explore how to control the aquatic plant growth and natural succession of the pond to wetland for the long term