

Consultants

Architect
Murphy Burnham & Bultrick Architects
48 West 37th Street, 14th Floor
New York, NY 10018
212.768.7676

Landscape Architect
Starr Whitehouse Landscape Architects
80 Broad Street, 1700
New York, NY, 10004
212.487.3272

Civil Engineer
Cashin Associates, P.C.
1200 Veterans Memorial Highway
Hauppauge, New York 11788
631.348.7600

Structural Engineer
Silman
32 Old Slip
New York, NY 10005
212.620.7970

Mechanical Engineer
Altieri Sebor Wieber Consulting Engineers
31 Knight Street
Norwalk, CT 06851
203.866.5538

Cost Consultant
Slocum Construction Consulting, Inc.
37 Pulver Road
Hudson, NY 12534
518.822.0834

Lighting Designer
Melanie Freundlich Lighting Design
252 West 38th Street
New York, NY 10018
212.741.0194

Surveyor
Naik Group
200 Metroplex Drive, Suite 403
Edison, New Jersey, 08817
212.575.2701

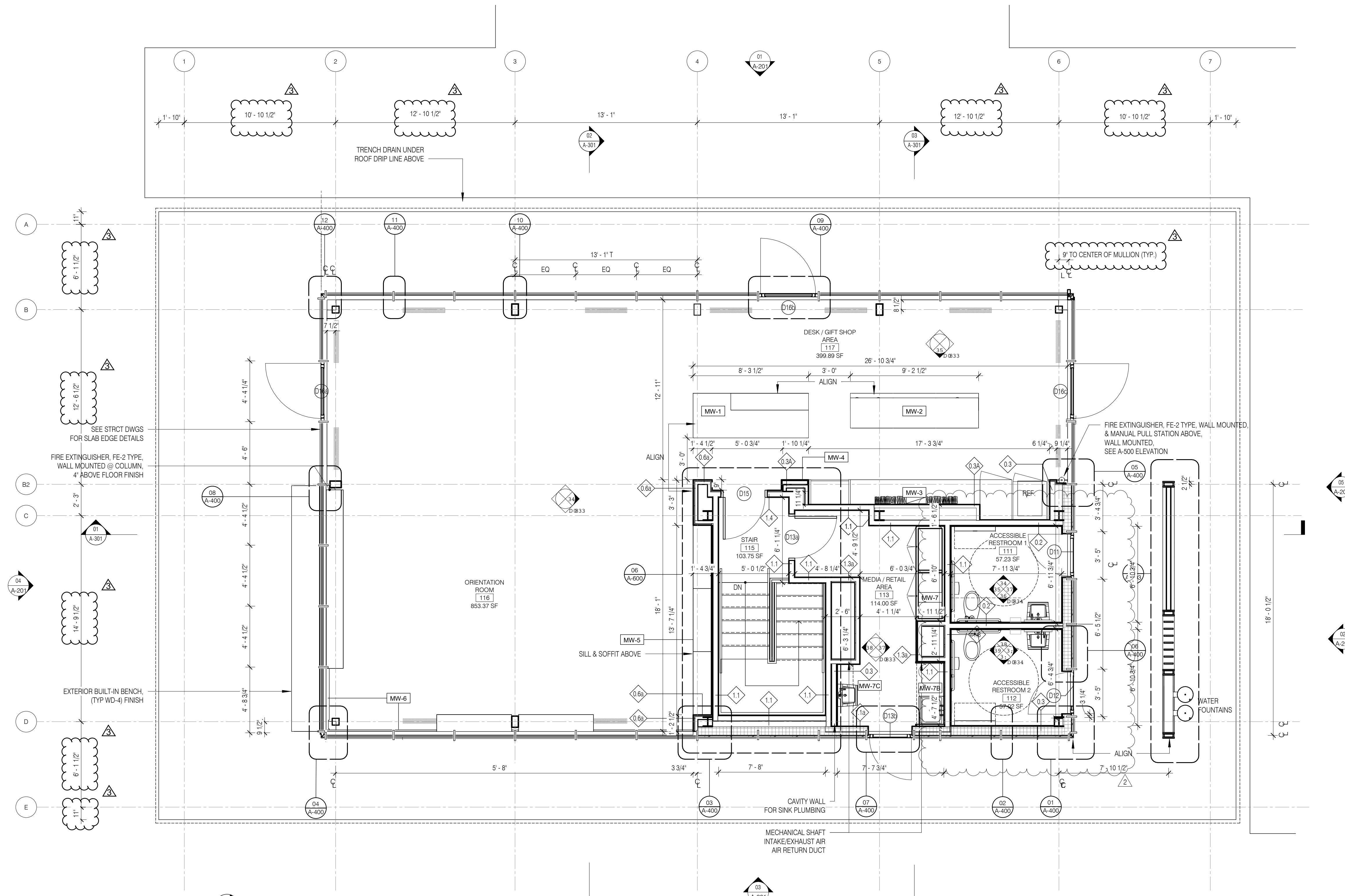
PV Installation Consultant
National Solar Technologies
166 Taylor Drive
Buffalo, NY, 14043
716.725.5913

Graphic Consultant
LVCK, Environmental Graphics
55 Broadway, Suite 322
New York, NY 10006
347.709.3927

Date	Issue	Rev.
19.07.19	Schematic Design	
20.08.21	Design Development	
20.12.18	50% Construction Documents	
21.05.19	90% Construction Documents	
22.05.26	100% Bid Set	
22.08.26	Conformed Set	
23.03.30	Restroom/Tile Revisions	2
22.04.19	Gridline Revisions	3

Exhibit C - Referenced Visitor Center Construction Drawings

FLOOR PLANS GENERAL NOTES:
1. STAIR ENCLOSURE TO BE 1HR RATED. SEE A-950 PARTITION TYPES
2. MECHANICAL SHAFTS TO BE 1HR RATED. SEE A-950 PARTITION TYPES
3. MECHANICAL ROOM WALLS TO BE LAMINATED W/ SHEETROCK, TAPED AND 1 COAT OF SPACKLED
4. REFER TO MECH DWGS FOR EXACT LAYOUT OF MECH EQUIPMENT



01 FIRST FLOOR PLAN
SCALE: 1/4" = 1'-0"

A-101

FIRST FLOOR PLAN

**Bayard Cutting Arboretum
Parking & Visitor Center**

Bayard Cutting Arboretum State Park
440 Montauk Hwy, Great River, NY 11739

Consultants

Architect
Murphy Burnham & Bultrick Architects
48 West 37th Street, 14th Floor
New York, NY 10018
212.768.7676

Landscape Architect
Starr Whitehouse Landscape Architects
80 Broad Street, 1700
New York, NY, 10004
212.487.3272

Civil Engineer
Cashin Associates, P.C.
1200 Veterans Memorial Highway
Hauppauge, New York 11788
631.348.7600

Structural Engineer
Silman
32 Old Slip
New York, NY 10005
212.620.7970

Mechanical Engineer
Altieri Sebor Wieber Consulting Engineers
31 Knight Street
Norwalk, CT 06851
203.866.5538

Cost Consultant
Slocum Construction Consulting, Inc.
37 Pulver Road
Hudson, NY 12534
518.822.0834

Lighting Designer
Melanie Freundlich Lighting Design
252 West 38th Street
New York, NY 10018
212.741.0194

Surveyor
Naik Group
200 Metroplex Drive, Suite 403
Edison, New Jersey, 08817
212.575.2701

PV Installation Consultant
National Solar Technologies
166 Taylor Drive
Buffalo, NY, 14043
716.725.5913

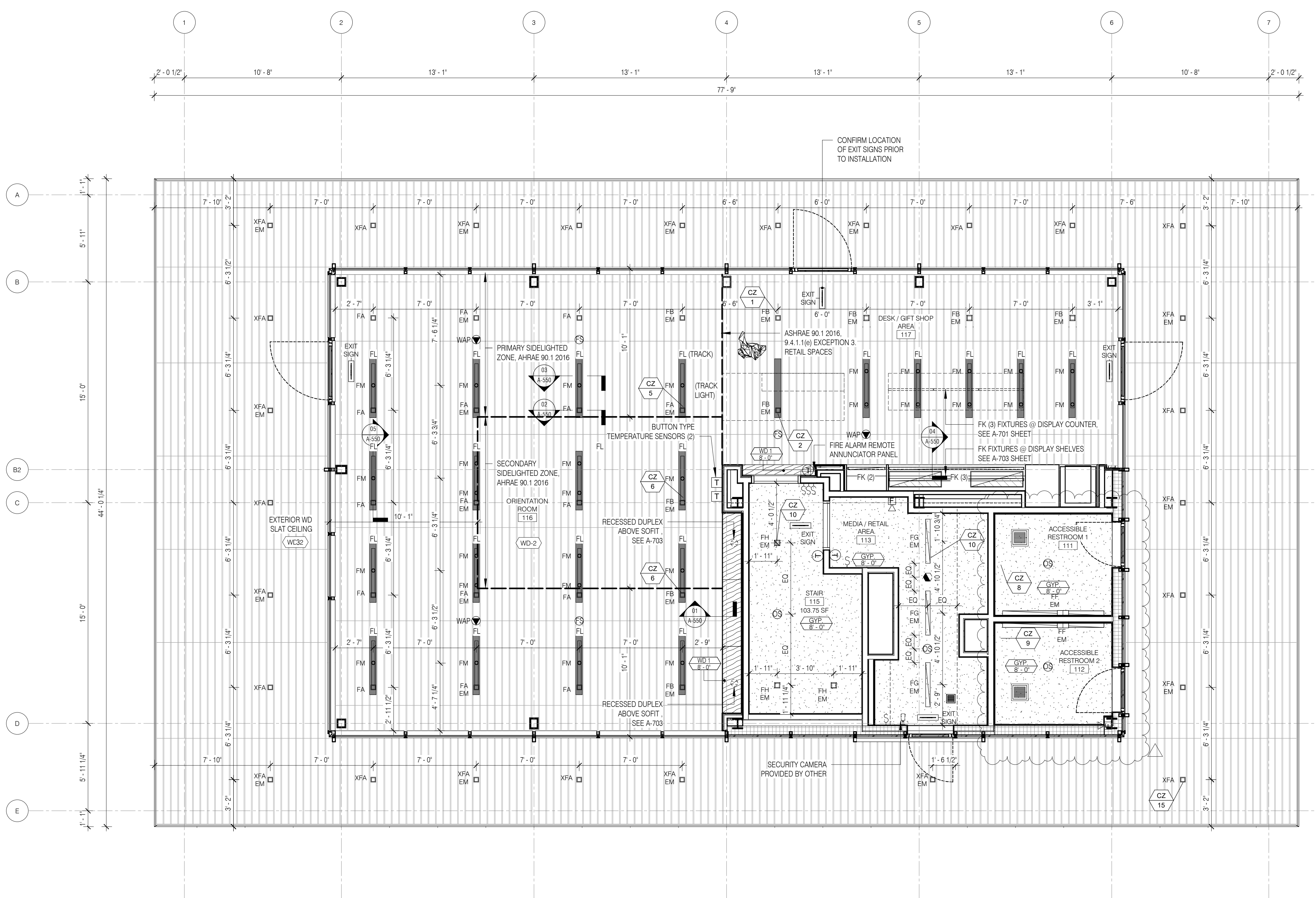
Graphic Consultant
LVCK, Environmental Graphics
55 Broadway, Suite 322
New York, NY 10006
347.709.3927

Date	Issue	Rev.
20.08.21	Design Development	
20.12.18	50% Construction Documents	
21.05.19	90% Construction Documents	
22.05.26	100% Bid Set	
22.08.26	Conformed Set	
23.03.30	Restroom/Tile Revisions	

- RFP GENERAL NOTES:
1. ALL FIN. CLNG. DIMS ARE FROM T.O. SLAB
 2. FOR CLNG. FINISH TYPES, SEE A-900 FINISH SCHEDULE
 3. SEE SPECS FOR LIGHTING FIXTURE TYPE CUT SHEETS
 4. STAIR CEILING TO BE 1-HR RATED, STAIR FIXTURES TO BE FIRE-RATED AS NEEDED
 5. EM POWER IS PROVIDED BY AN INVERTER AT BASEMENT, REFER TO ELECTRICAL DRAWING E-301

- CONTROL ZONE LEGEND:
1. LIGHTING CONTROL ZONES 1-4 IN RETAIL AREA ARE EXEMPT FROM ASHRAE 90.1 2016 SIDELIGHT ZONE CONTROL REQUIREMENTS.
 2. LIGHTING CONTROL ZONES 5 AND 6 ARE IN THE PRIMARY SIDELIGHTED ZONE.
 3. LIGHTING CONTROL ZONE 7 IS IN THE SECONDARY SIDELIGHTED ZONE.
 4. ALL LIGHT FIXTURE TYPES DIM WITH THE EXCEPTION TYPE FF, FG, FH, FJ.
 5. EXHIBIT LIGHTING SYSTEM CONTROL: PROVIDE CONTROL ZONES 16-19 FOR TYPE FL TRACK LIGHTS. WIRE 2-CIRCUIT LIGHTING TRACK FOR (2) SEPARATE DIMMING ZONES WITH WALL BOX DIMMERS LOCATED AT 1ST FLOOR STAIR LANDING.

ELECTRICAL SYMBOLS	
	EXIT LIGHT CEILING MOUNTED, (ARROWS AS INDICATED)
	EXIT LIGHT END MTD. (SHADING INDICATES LIGHTED FACE(S))
	EMERGENCY LIGHTING BATTERY UNIT W/HEADS
	SINGLE CONVENIENCE RECEPTACLE - 16'AFF U.O.N.
	DUPLEX CONVENIENCE RECEPTACLE - 16'AFF U.O.N.
	DOUBLE DUPLEX CONVENIENCE RECEPTACLE - 16'AFF U.O.N.
	GROUND FAULT INTERRUPTING RECEPTACLE - 16'AFF U.O.N.
	WALL MOUNTED JUNCTION BOX
	CEILING MOUNTED DUPLEX RECEPTACLE
	CEILING MOUNTED COMMUNICATIONS OUTLET
	COMMUNICATIONS OUTLET - 16'AFF U.O.N.
	FLOOR BOX WITH DUPLEX RECEPTACLE
	FLOOR BOX WITH DOUBLE DUPLEX RECEPTACLE
	FLOOR BOX WITH DUPLEX RECEPTACLE AND DATA
	FLOOR BOX WITH DOUBLE DUPLEX RECEPTACLE AND DATA
	WAP CEILING-MOUNTED WIRELESS ACCESS POINT
	S SINGLE POLE SWITCH - 48'AFF U.O.N.
	S ₃ 3-WAY SWITCH - 48'AFF U.O.N.
	S _D DIMMER (SWITCH) OR CONTROL - 48'AFF U.O.N.
	OC CEILING-MOUNTED OCCUPANCY SENSOR
	VC CEILING-MOUNTED VACANCY SENSOR
	S _O OCCUPANCY SENSOR SWITCH - WALL MOUNTED - 48'AFF U.O.N.
	FLS FIRE ALARM STROBE LIGHT - 80'AFF U.O.N.
	FS RECESSED CLG-MTD FIRE ALARM HORN/STROBE
	F FIRE ALARM MANUAL PULL STATION - 48'AFF U.O.N.
	SD SMOKE DETECTOR (PHOTOELECTRIC U.O.N.)



01 FIRST FLOOR RCP
SCALE: 1/4" = 1'-0"

**Bayard Cutting Arboretum
Parking & Visitor Center**

Bayard Cutting Arboretum State Park
440 Montauk Hwy, Great River, NY 11739

Consultants

Architect
Murphy Burnham & Bultrick Architects
48 West 37th Street, 14th Floor
New York, NY 10018
212.768.7676

Landscape Architect
Starr Whitehouse Landscape Architects
80 Broad Street, 1700
New York, NY, 10004
212.487.3272

Civil Engineer
Cashin Associates, P.C.
1200 Veterans Memorial Highway
Hauppauge, New York 11788
631.348.7600

Structural Engineer
Silman
32 Old Slip
New York, NY 10005
212.620.7970

Mechanical Engineer
Altieri Sebor Wieber Consulting Engineers
31 Knight Street
Norwalk, CT 06851
203.866.5538

Cost Consultant
Slocum Construction Consulting, Inc.
37 Pulver Road
Hudson, NY 12534
518.822.0834

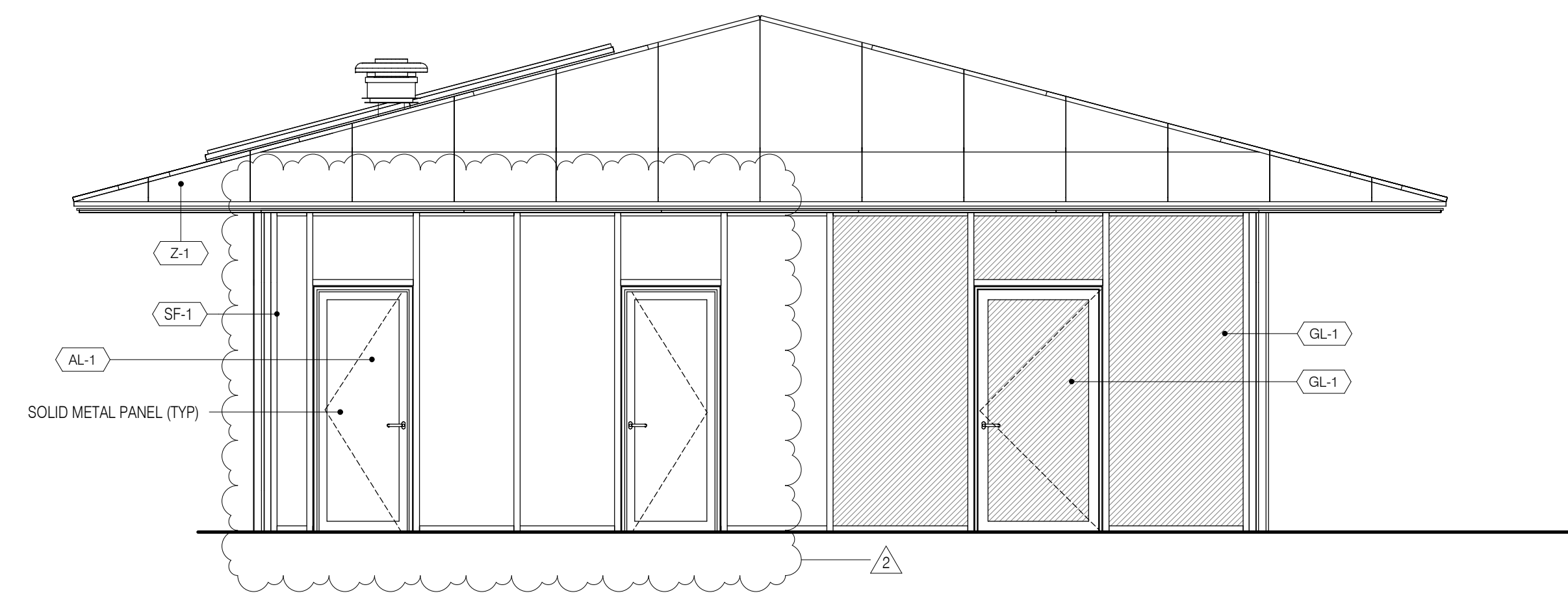
Lighting Designer
Melanie Freundlich Lighting Design
252 West 38th Street
New York, NY 10018
212.741.0194

Surveyor
Naik Group
200 Metroplex Drive, Suite 403
Edison, New Jersey, 08817
212.575.2701

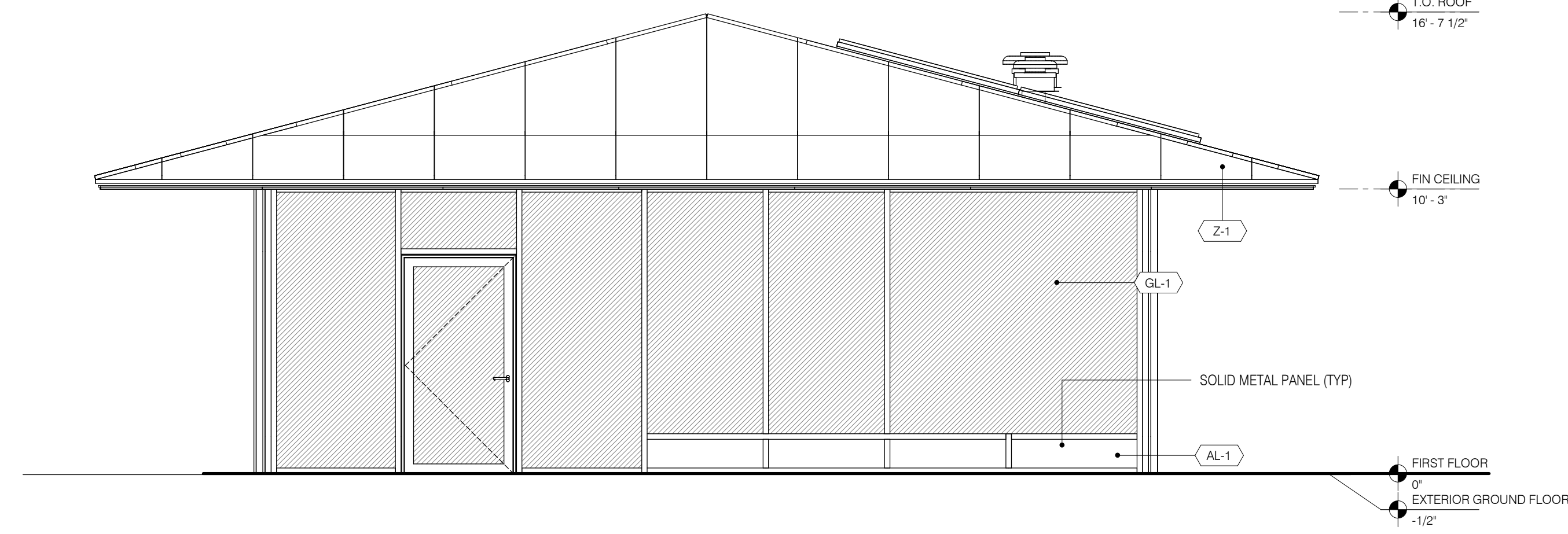
PV Installation Consultant
National Solar Technologies
166 Taylor Drive
Buffalo, NY, 14043
716.725.5913

Graphic Consultant
LVCK, Environmental Graphics
55 Broadway, Suite 322
New York, NY 10006
347.709.3927

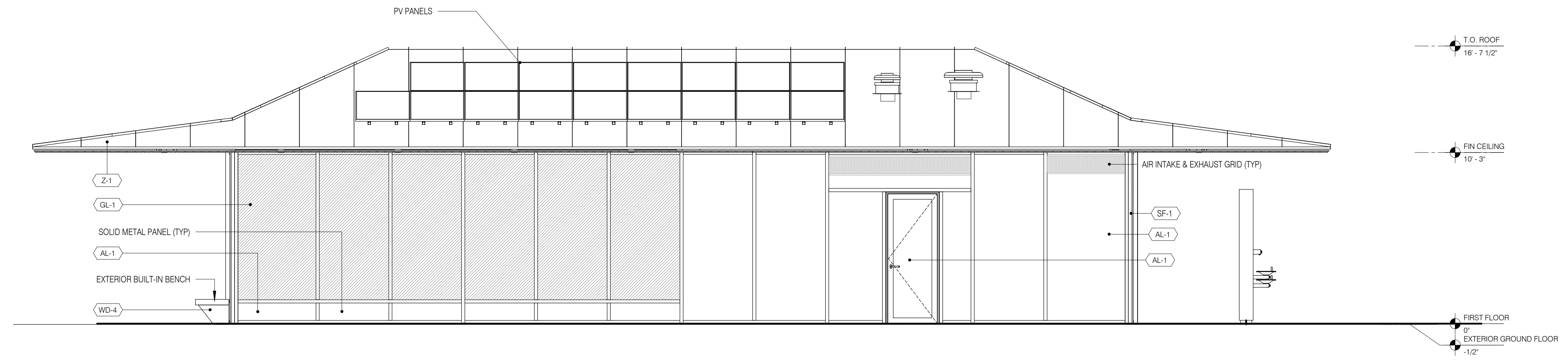
Date	Issue	Rev.
19.07.19	Schematic Design	
20.08.21	Design Development	
20.12.18	50% Construction Documents	
21.05.19	90% Construction Documents	
22.05.26	100% Bid Set	
22.08.26	Conformed Set	
23.03.30	Restroom/Tile Revisions	2



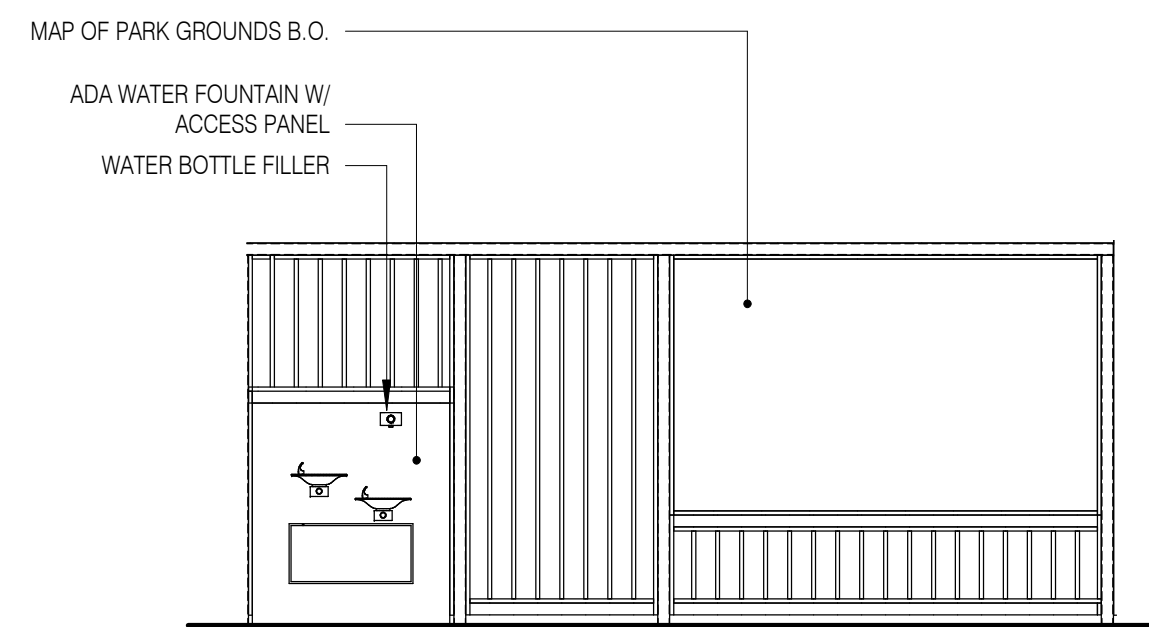
05 ELEVATION - EAST
SCALE: 1/4" = 1'-0"



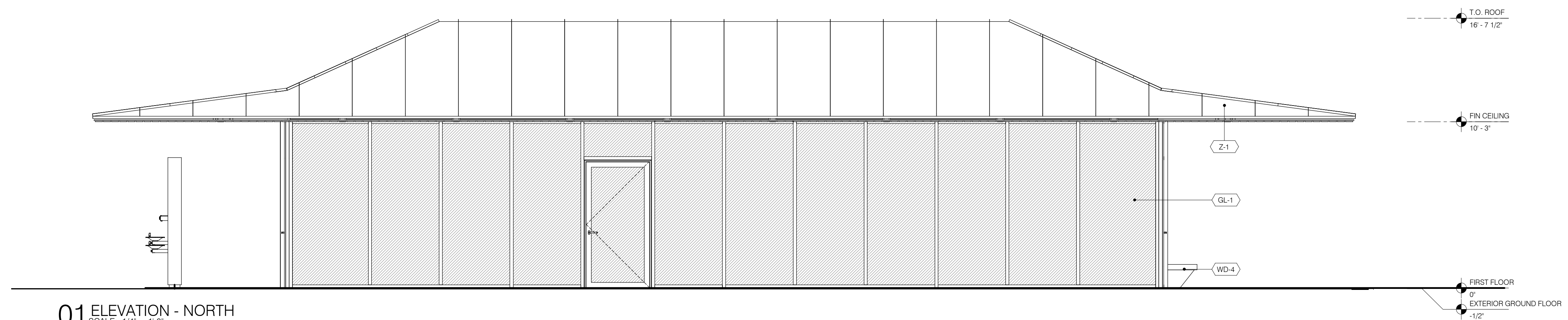
04 ELEVATION - WEST
SCALE: 1/4" = 1'-0"



03 ELEVATION - SOUTH
SCALE: 1/4" = 1'-0"



02 ELEVATION - SCREEN
SCALE: 1/4" = 1'-0"



01 ELEVATION - NORTH
SCALE: 1/4" = 1'-0"

A-201

BUILDING
ELEVATIONS

Consultants

Architect
Murphy Burnham & Bultrick Architects
48 West 37th Street, 14th Floor
New York, NY 10018
212.768.7676

Landscape Architect
Starr Whitehouse Landscape Architects
80 Broad Street, 1700
New York, NY, 10004
212.487.3272

Civil Engineer
Cashin Associates, P.C.
1200 Veterans Memorial Highway
Hauppauge, New York 11788
631.348.7600

Structural Engineer
Silman
32 Old Slip
New York, NY 10005
212.620.7970

Mechanical Engineer
Altieri Sebor Wieber Consulting Engineers
31 Knight Street
Norwalk, CT 06851
203.866.5538

Cost Consultant
Slocum Construction Consulting, Inc.
37 Pulver Road
Hudson, NY 12534
518.822.0834

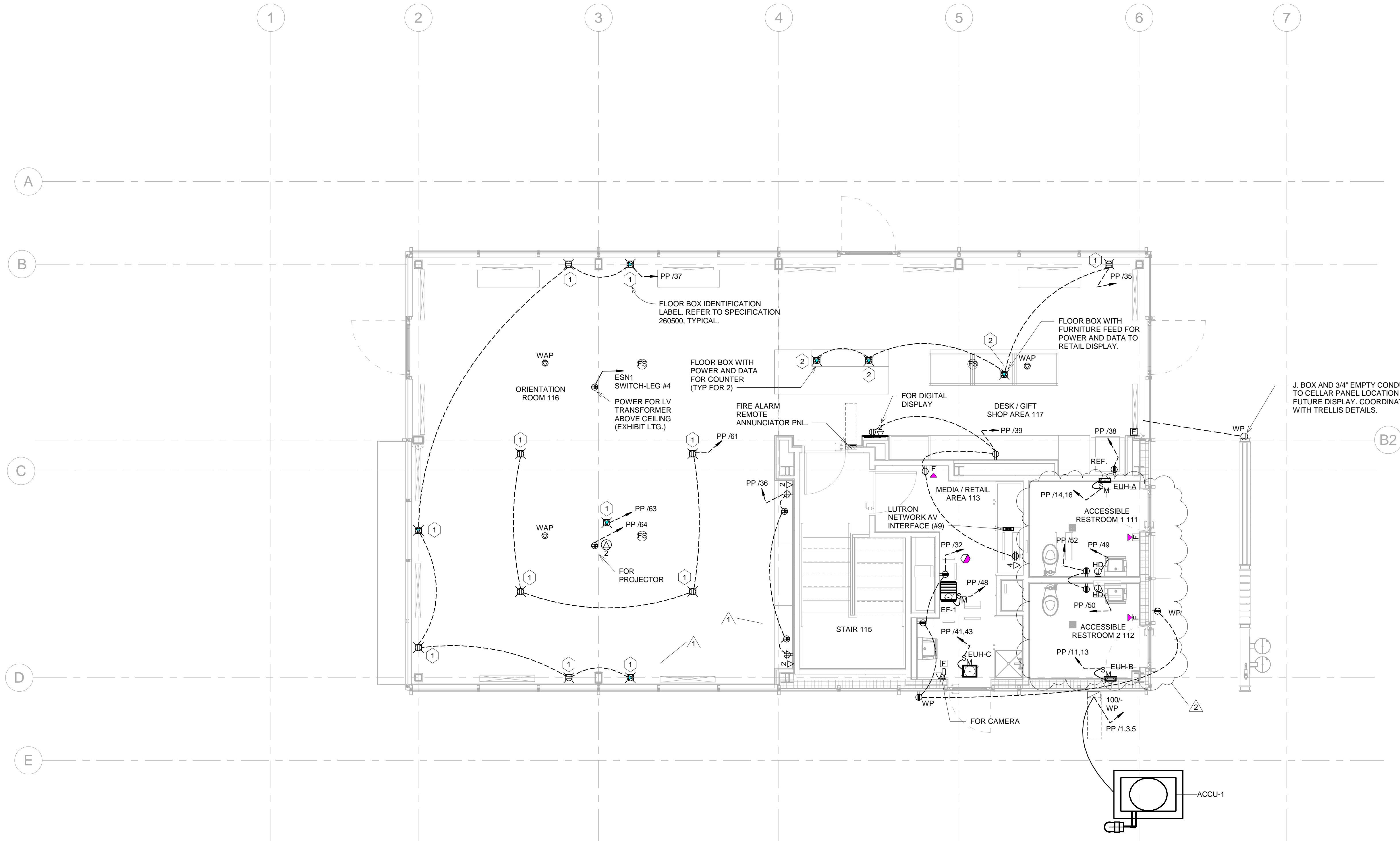
Lighting Designer
Melanie Freundlich Lighting Design
252 West 38th Street
New York, NY 10018
212.741.0194

Surveyor
Naik Group
200 Metroplex Drive, Suite 403
Edison, New Jersey, 08817
212.575.2701

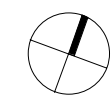
PV Installation Consultant
National Solar Technologies
166 Taylor Drive
Buffalo, NY, 14043
716.725.5913

Graphic Consultant
LVCK, Environmental Graphics
55 Broadway, Suite 322
New York, NY 10006
347.709.3927

Date	Issue	Rev.
05.22.2020	50% DD Set	
06.12.2020	75% DD Set	
08.21.2020	100% DD Set	
12.10.2020	50% CD Set	
03.12.2021	90% CD Set	
05.26.2022	100% Bid Set	
07.11.2022	100% Bid Addendum Set #1	
08.26.2022	Conformed Set	
01.17.2023	Floor Boxes	1
03.30.2023	Restroom/Tile Revisions	2



1 FIRST FLOOR - POWER
SCALE: 1/4" = 1'-0"



NOTES:
1. GENERAL CONTRACTOR TO PROVIDE ALL OPENINGS, CUTTING AND PATCHING.
COORDINATION BETWEEN TRADES IS REQUIRED.